

GEUTEBRÜCK



G-ST Software

G-Core

G-SIM

G-Health

G-Link

Installation manual

Introduction

Without prior approval, this publication, in whole or in part, may not be copied, translated or transformed into a machine-readable form.

GEUTEBRÜCK GmbH assumes no liability for the accuracy of the information in this document or for the software or materials contained therein.

GEUTEBRÜCK GmbH shall not be liable for any incidental or consequential damages or special damages arising from or in connection with this documentation, regardless of whether based on prohibited actions, a contract or otherwise in connection with this documentation, the software or specifications contained or used therein.

GEUTEBRÜCK GmbH reserves the right to change this documentation and any information mentioned therein without previous notice. The software described herein is subject to the terms of a separate license agreement.



Note that the illustrations in this document may not fit your software version.

This manual represents the current technological state of our devices. Errors and omissions excepted.

© Copyright 2018 by GEUTEBRÜCK

Table of contents

Introduction	1
G-SIM Installation	3
Introduction.....	3
Software components.....	4
Software installation.....	5
G-SIM Management Console start settings	14
G-SIM Operator Console start settings	15
G-Core Installation	16
Introduction.....	16
Software installation.....	17
G-Health Installation	22
Introduction.....	22
Software Installation.....	23
Installing the G-Health Components.....	23
Installation G-Health Server	24
Installation G-Health Client.....	30
G-Link Installation	34
Introduction.....	34
Software installation.....	35

G-SIM Installation

Introduction

Without prior approval, this publication, in whole or in part, may not be copied, translated or transformed into a machine-readable form.

GEUTEBRÜCK GmbH assumes no liability for the accuracy of the information in this document or for the software or materials contained therein.

GEUTEBRÜCK GmbH shall not be liable for any incidental or consequential damages or special damages arising from or in connection with this documentation, regardless of whether based on prohibited actions, a contract or otherwise in connection with this documentation, the software or specifications contained or used therein.

GEUTEBRÜCK GmbH reserves the right to change this documentation and any information mentioned therein without previous notice. The software described herein is subject to the terms of a separate license agreement.



Note that the illustrations in this document may not fit your software version.

This manual represents the current technological state of our devices. Errors and omissions excepted.

© Copyright 2018 by GEUTEBRÜCK

Detailed **information** on the **installation**, **operation** and **functions**, can be found in the **G-SIM online help**.



NOTE

Install the software application  **G-SIMHelp** to a hard drive directory of your choice.

Software components

G-SIM is a server-based software product and consists of the five core components:

- **G-SIM Server:** The heart of the system is the G-SIM server. The server is the communications and control center of the system. All system requests, instructions and messages are managed using the G-SIM server. It is installed as a service under the Windows® operating system. Part of the server package is the Connection Manager, which coordinates all communications smoothly and according to defined rules.
- **G-SIM Agent:** A software component that can be installed on various Windows® computers running G-SIM. The agents collect data on the operational readiness of various system components and send the results to the G-SIM server. Using the G-SIM Agent, alarms are generated and the necessary data is transmitted to the G-SIM Server for the display of video analysis, text display and process data, such as number plate recognition.
- **Operator Console:** From the perspective of the operator, there is no difference between the operator console (OpCon) and G-SIM itself. Operators interact with the system exclusively through the operator console, even when you take into account video walls and remote consoles.
- **Management Console:** The management console (ManCon) is software for the configuration and maintenance tasks that arise in the context of G-SIM. Because it is a separate system, it is impossible for users to "accidentally" access the administrative functions due to incorrectly configured OpCons.
- **Updater Service:** The updater service is configured using the ManCon and it ensures that the various parts of G-SIM can be kept up to date, regardless of where they are hosted.

Software installation

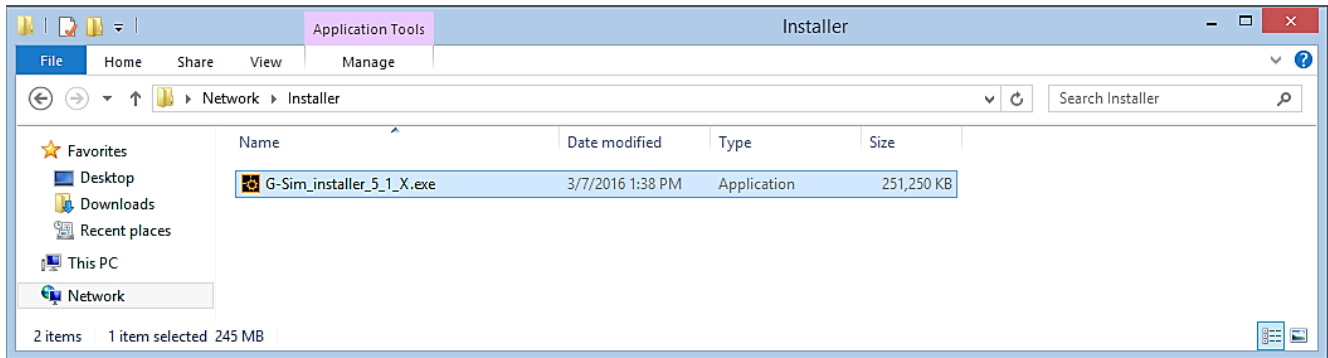


All modules use the .Net Framework 4.x.

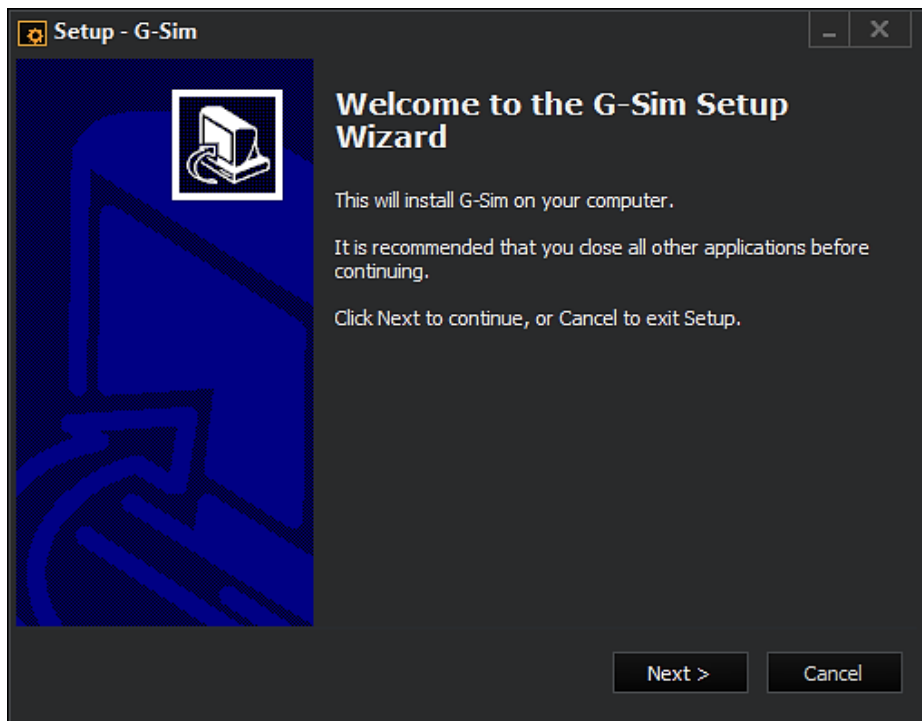


G-SIM requires an SQL Server. If no SQL server is installed, G-SIM will attempt to download the GEUTEBRUCK SQL server installer from the Internet.

Insert the provided USB stick and the G-SIM dongle into a free USB slot. In the explorer, please select the **USB-stick directory** and to install G-SIM, double click on the installation file ***G-SIM_installer_X_X_X.exe***.

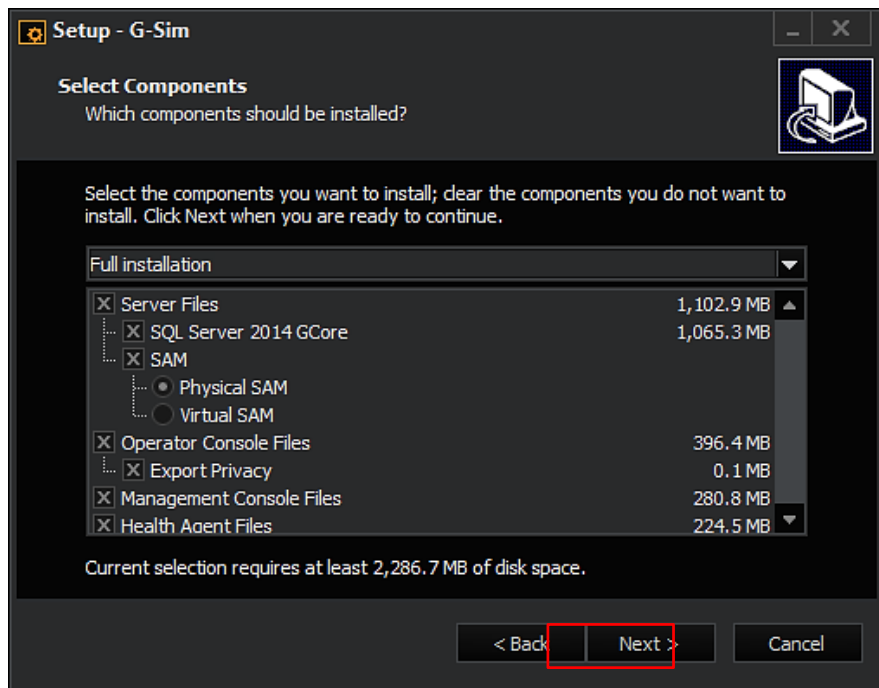


The installation dialog opens.

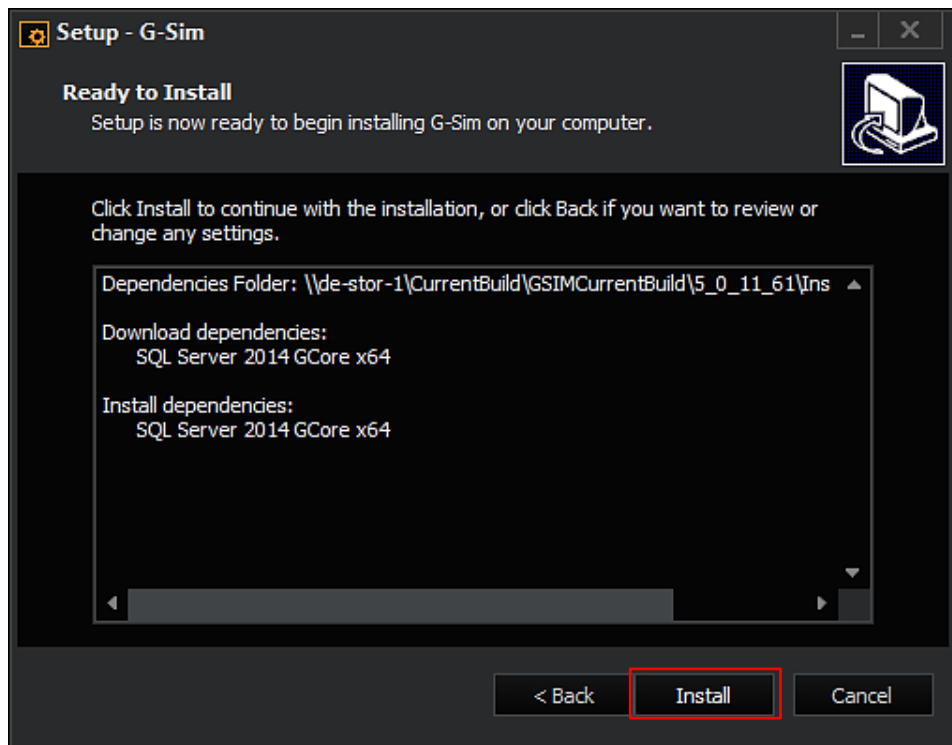


Click **Next**.

Select the components you want to install.
For an initial installation, select everything.

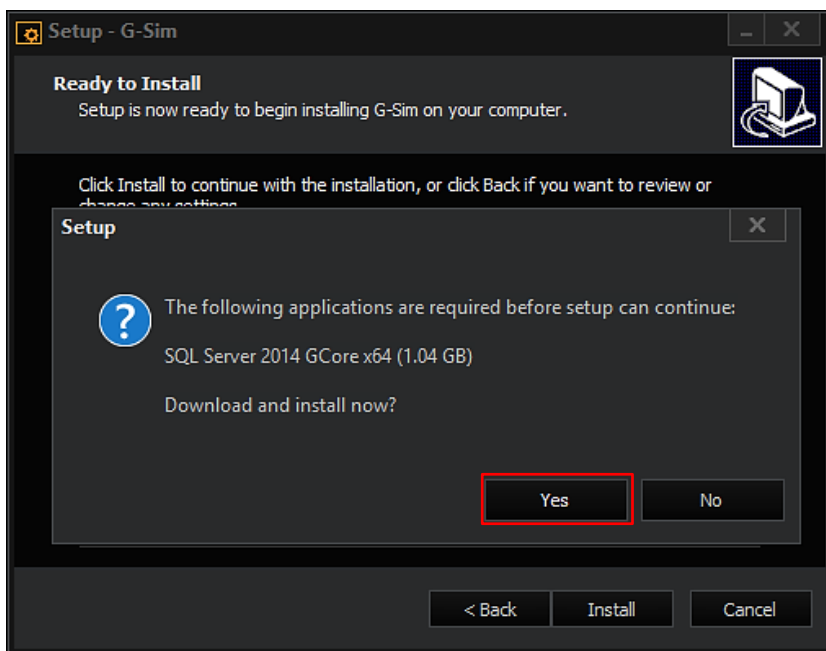


Click **Next**.

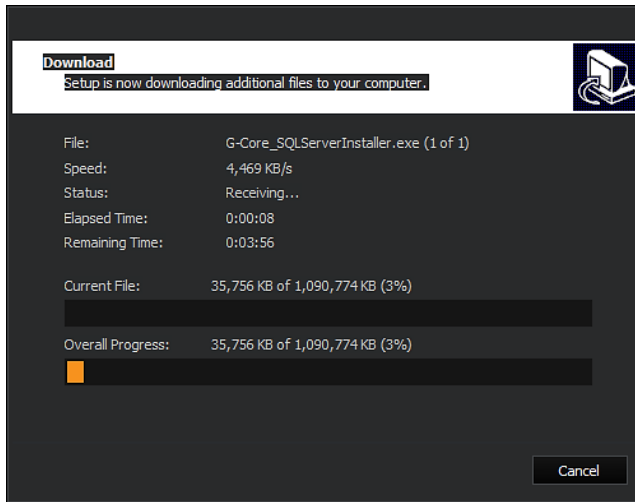


Click **Install**.

G-SIM requires an SQL Server. If no SQL server is installed, G-SIM will attempt to download the GEUTEBRUCK SQL server installer from the Internet.



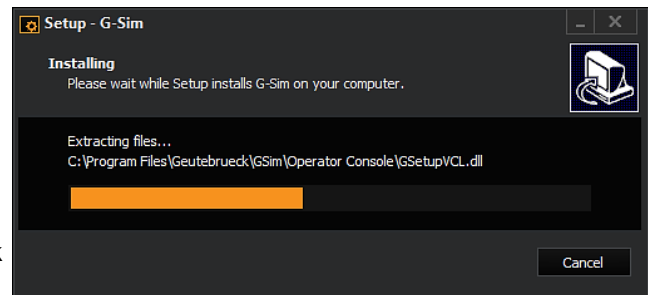
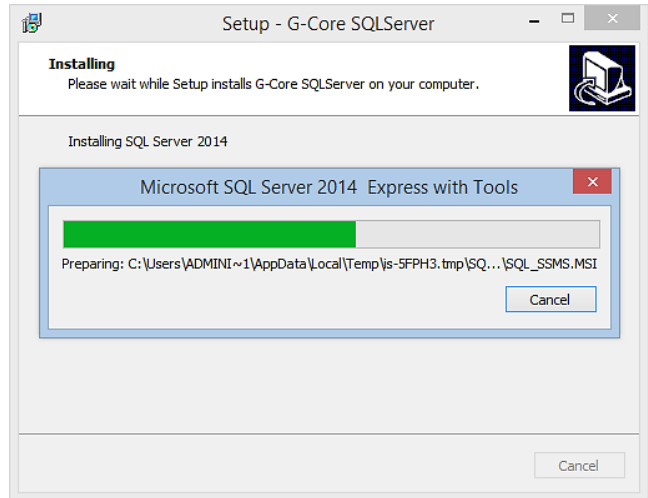
Click **Yes**.



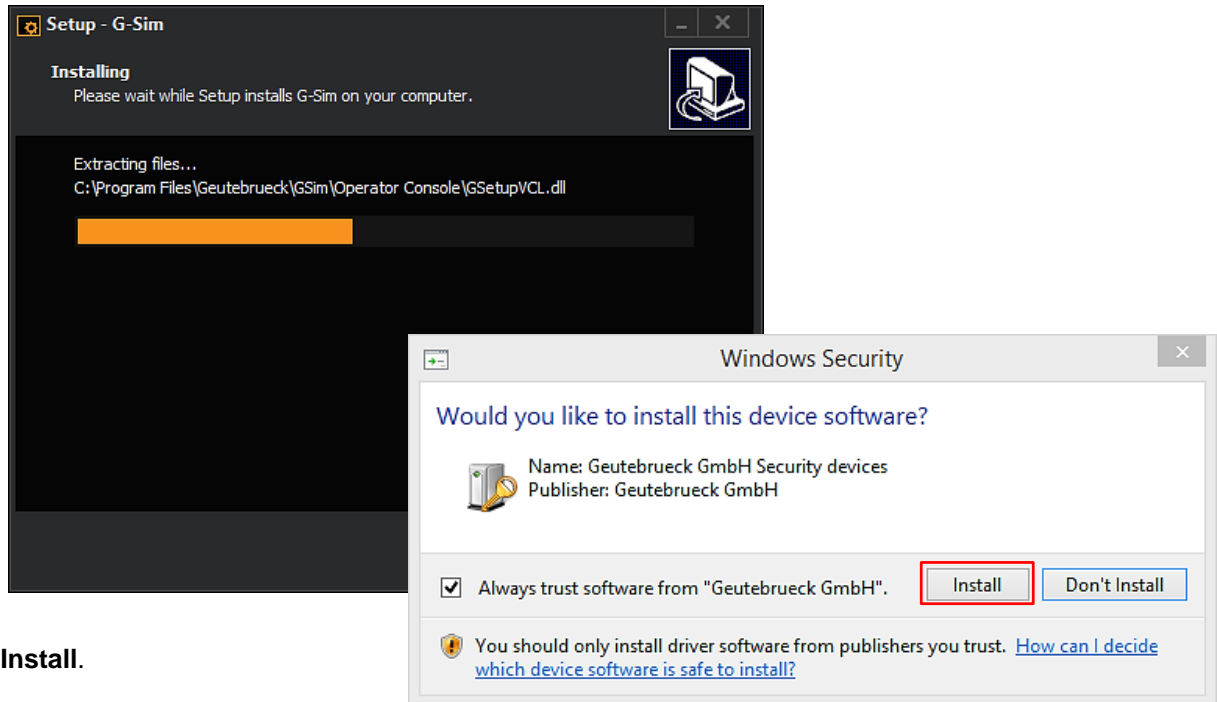
Setup loads the SQL server installation files from the Internet and installs the SQL server.

After server installation, setup continues with G-SIM installation.

During installation, the installer routine will automatically download the Microsoft .NET Framework and install it.

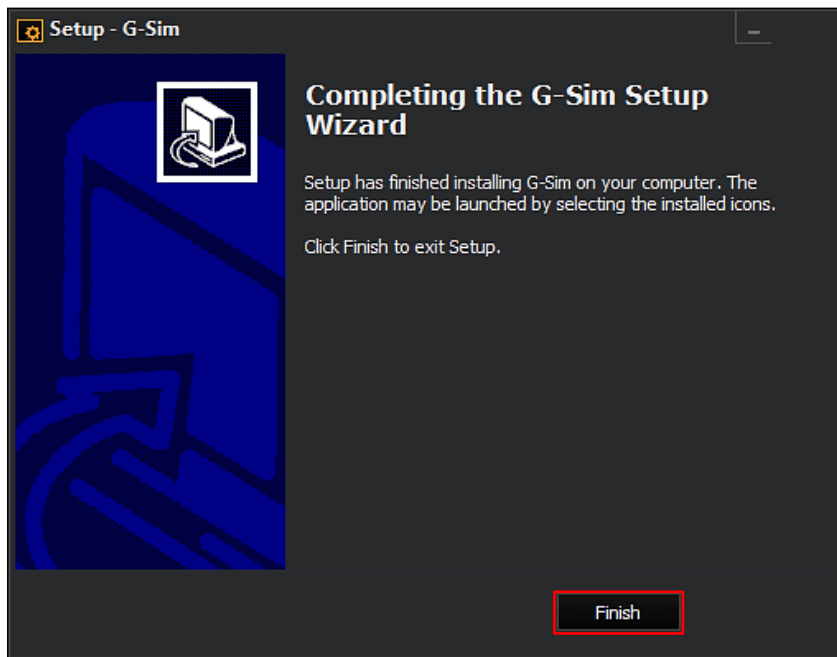


During installation, the following prompt appears:



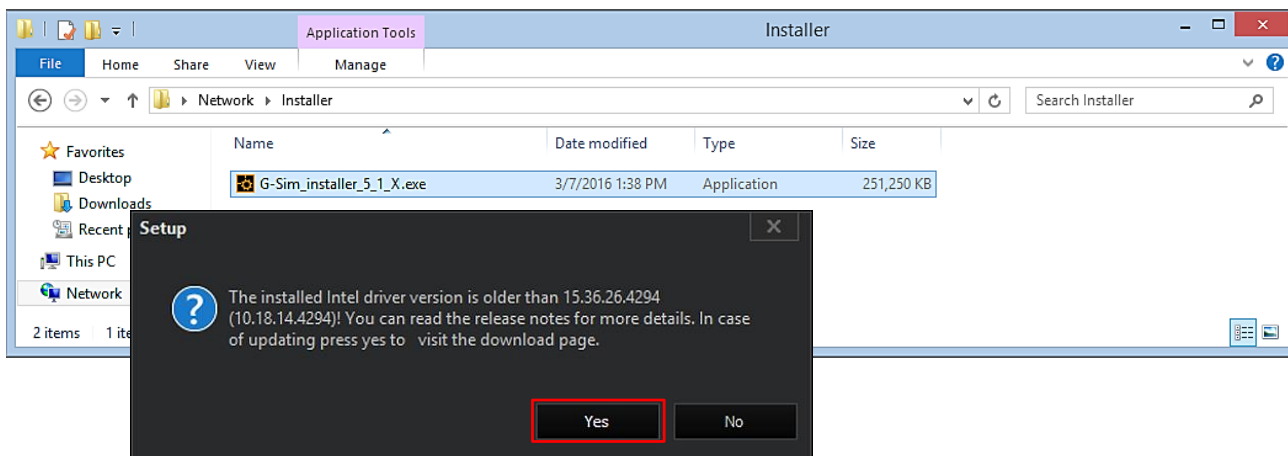
Click **Install**.

At the end of the installation, the following dialog appears:



Click **Finish**.

The following dialog appears:



Click **Yes** to go to the download page for the Intel graphics driver and to update the driver. This is important to ensure that G-SIM works properly.
Depending on G-SIM version, select the 32-bit or 64-bit version of the driver and follow the instructions on the Intel download page.
After downloading, please update the driver.

Installation is now completed.

After installation, please **reboot the system**.

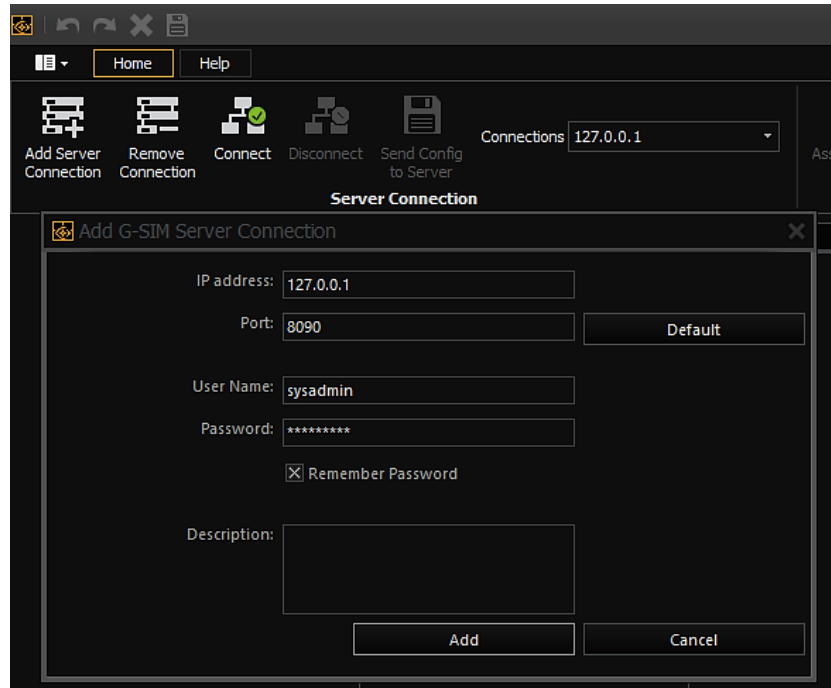
G-SIM Management Console start settings

- Start the Management Console by double-clicking the desktop icon.



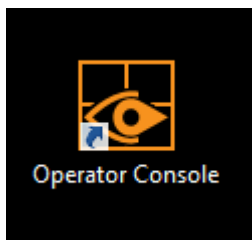
- **Add new server connection:**

- IP address: **127.0.0.1**
- User name: **sysadmin**
- Password: **masterkey**



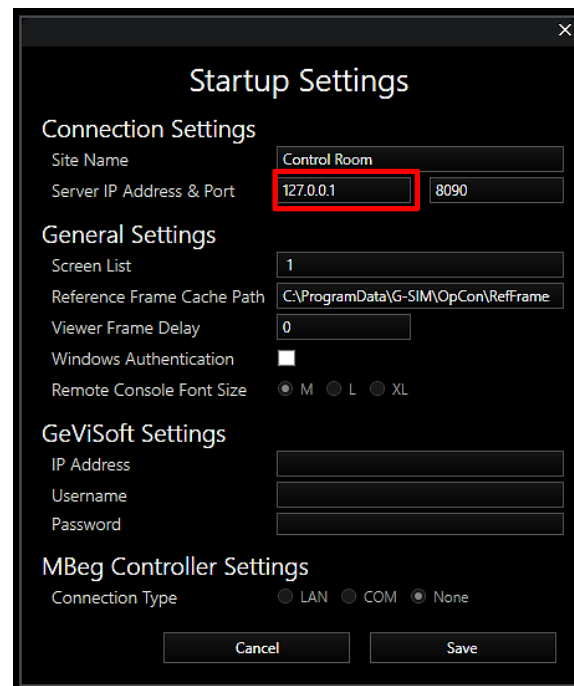
G-SIM Operator Console start settings

- Start the **Operator Console** by double-clicking the desktop icon.



- **Add new server connection:**

Startup settings, **Server IP address 127.0.0.1**

A screenshot of the 'Startup Settings' dialog box. The dialog has a dark background and a title bar with a close button. It is divided into several sections: 'Connection Settings' with fields for 'Site Name' (Control Room) and 'Server IP Address & Port' (127.0.0.1 and 8090); 'General Settings' with fields for 'Screen List' (1), 'Reference Frame Cache Path' (C:\ProgramData\G-SIM\OpCon\RefFrame), 'Viewer Frame Delay' (0), 'Windows Authentication' (unchecked), and 'Remote Console Font Size' (M, L, XL); 'GeViSoft Settings' with fields for 'IP Address', 'Username', and 'Password'; and 'MBeg Controller Settings' with a 'Connection Type' (LAN, COM, None). At the bottom are 'Cancel' and 'Save' buttons. The 'Server IP Address' field is highlighted with a red rectangle.

G-Core Installation

Introduction

Without prior approval, this publication, in whole or in part, may not be copied, translated or transformed into a machine-readable form.

GEUTEBRÜCK GmbH assumes no liability for the accuracy of the information in this document or for the software or materials contained therein.

GEUTEBRÜCK GmbH shall not be liable for any incidental or consequential damages or special damages arising from or in connection with this documentation, regardless of whether based on prohibited actions, a contract or otherwise in connection with this documentation, the software or specifications contained or used therein.

GEUTEBRÜCK GmbH reserves the right to change this documentation and any information mentioned therein without previous notice. The software described herein is subject to the terms of a separate license agreement.



Note that the illustrations in this document may not fit your software version.

This manual represents the current technological state of our devices. Errors and omissions excepted.

© Copyright 2018 by GEUTEBRÜCK

Detailed **information** on the **installation**, **operation** and **functions**, can be found in the **G-Core online help**.



NOTE

Install the software application  **G-CoreHelp** to a hard drive directory of your choice.

Software installation

Here we show you how to install the software, which is easy to do and is completed quickly.

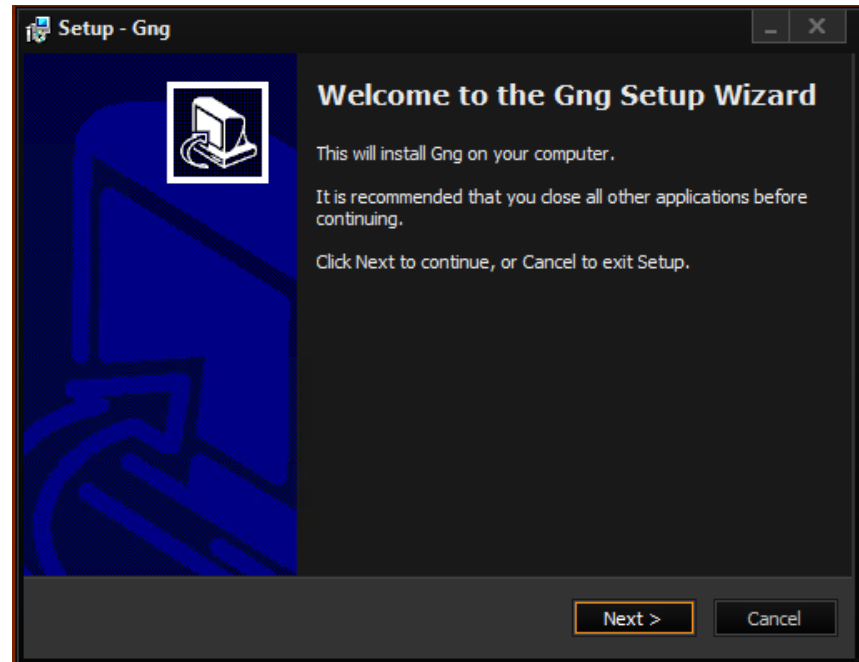


Please note that after the installation you may need to restart the device. Therefore, perform the installation only at non-critical times.

Open the installer by double clicking on the GNG installer exe-file.

First, you see the Welcome screen.

Click *Next*.



In the following dialog, you will be asked about which components you want to install:

Take a careful look at the dialog and select the components that you would like to install.

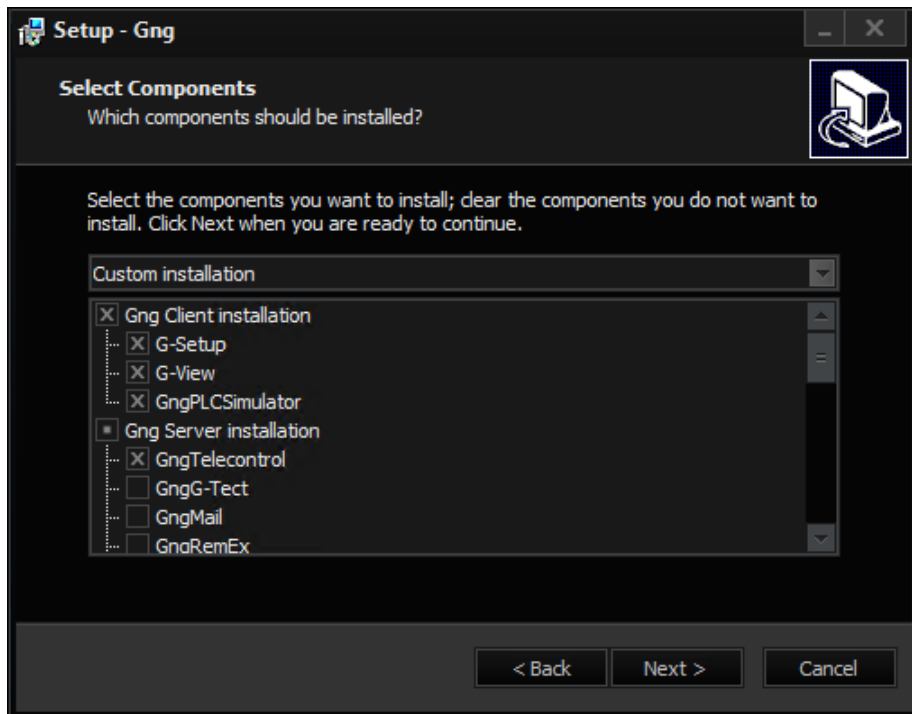
IMPORTANT

Please note that while all components can be installed, you will need a separate license for some parts of the program!

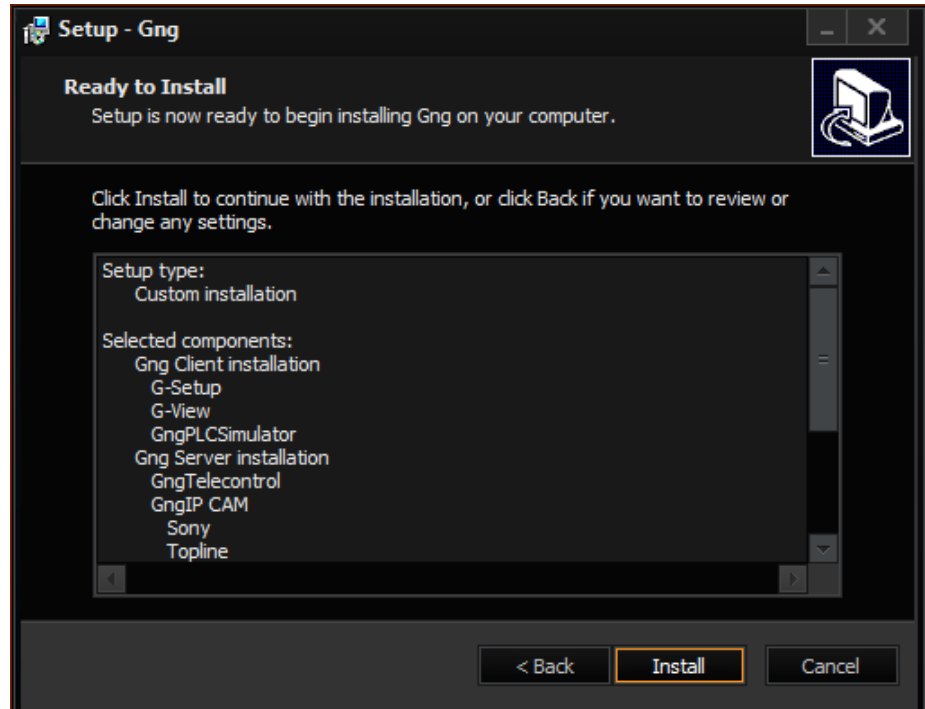
More about licenses and management thereof can be found [in the G-Core Online Help](#).

The selected components will be shown again in the next dialog.

Click *Install* to start the installation.



The selected components are presented to you again in the following dialog.

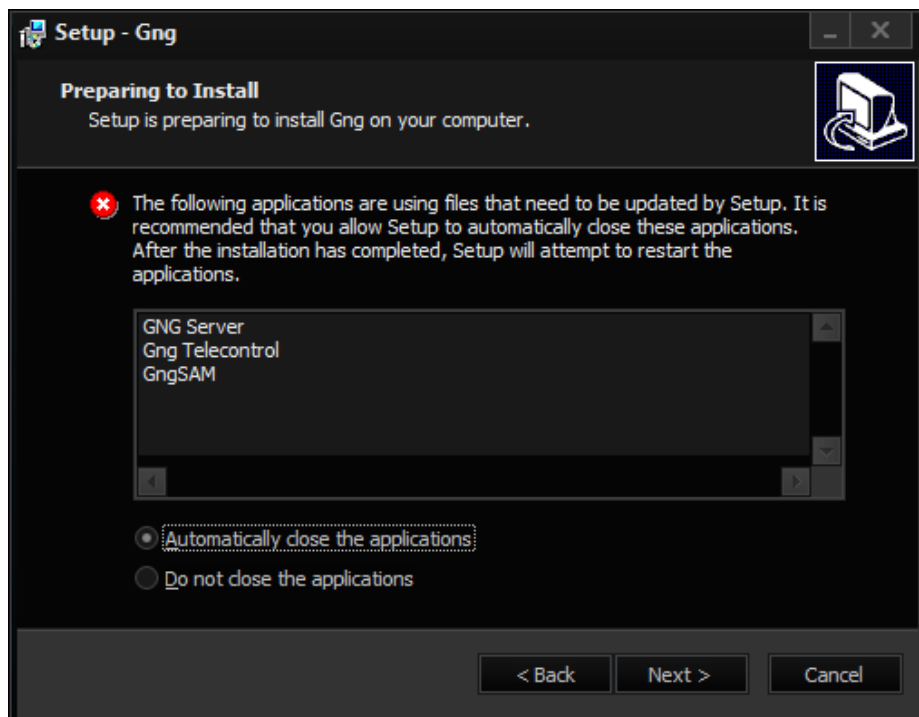


Click Install to start the installation.

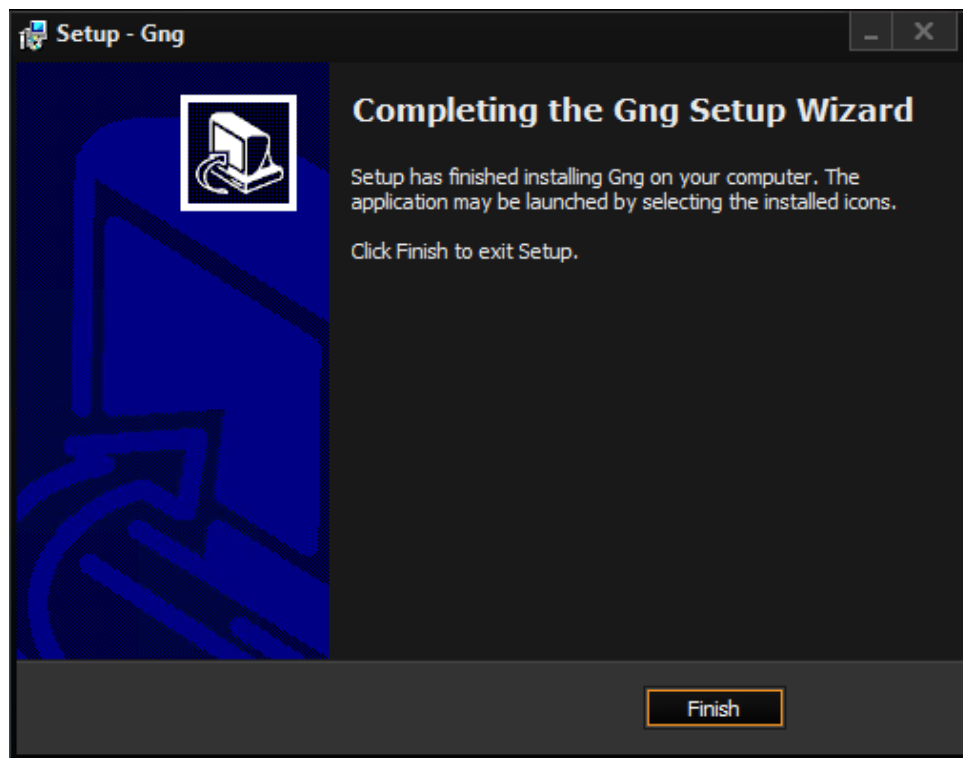
If you still want to make a change to your selection, click *Back*.

In the case of an update, or if you want to perform a fresh install for the machine, you will need to stop a few services before starting the installation.

Select *Automatically close the applications* and click *Next*.



The installation program will now install the G-Core software and at the end of the installation a message will appear, indicating the result.



Click *Finish*. The installation is now complete.

G-Health Installation

Introduction

Without prior approval, this publication, in whole or in part, may not be copied, translated or transformed into a machine-readable form.

GEUTEBRÜCK GmbH assumes no liability for the accuracy of the information in this document or for the software or materials contained therein.

GEUTEBRÜCK GmbH shall not be liable for any incidental or consequential damages or special damages arising from or in connection with this documentation, regardless of whether based on prohibited actions, a contract or otherwise in connection with this documentation, the software or specifications contained or used therein.

GEUTEBRÜCK GmbH reserves the right to change this documentation and any information mentioned therein without previous notice. The software described herein is subject to the terms of a separate license agreement. (EULA).



Note that the illustrations in this document may not fit your software version.

This manual represents the current technological state of our devices. Errors and omissions excepted.

© Copyright 2018 by GEUTEBRÜCK

Detailed **information** on the **installation**, **operation** and **functions**, can be found in the **G-Link Online Help**.



Note

Install the software application **GHealth_Help_X.X.X.exe** to a hard drive directory of your choice.

Software Installation

Installing the G-Health Components

There are two components within the G-Health system. These are:

- G-Health Server – **GHealthServer-v3.2.x.full.exe**
- G-Health Client – **GHealthClient-v3.2.x.full.exe**

Each setup application will first perform a check to ensure that the required prerequisite software is installed on the computer. If a required software component is not installed, the prerequisite wizard will attempt to install the software before proceeding with the rest of the installation.

G-Health Server

It is recommended that the G-Health Server is installed on a standalone server computer with no other 3rd party services running.

The prerequisites for the G-Health Server are as follows (these are all installed as part of the G-Health Server's installation process):

- Microsoft .NET 4.x
- Oracle Java JRE 1.7 or greater
- Joyent Node.js 0.12.0 or greater
- Elasticsearch 1.5 or greater

G-Health Client

The G-Health Client should be installed on computers running the Geutebrück NVR software.

The prerequisites for the G-Health Client are:

- Microsoft .NET 4.x

Registering the G-Health Client

The G-Health client must be registered to a server before it will start monitoring the NVR. To register the client:

1. From the Start menu, open the G-Health Client Registration Tool.
2. Enter the Server Address.
3. Optionally, set the site number if it is known.
4. Start the registration by clicking on the 'Register' button.

The client will attempt to connect and register with the server. If the registration is successful then the client information will appear in the G-Health Web Interface.

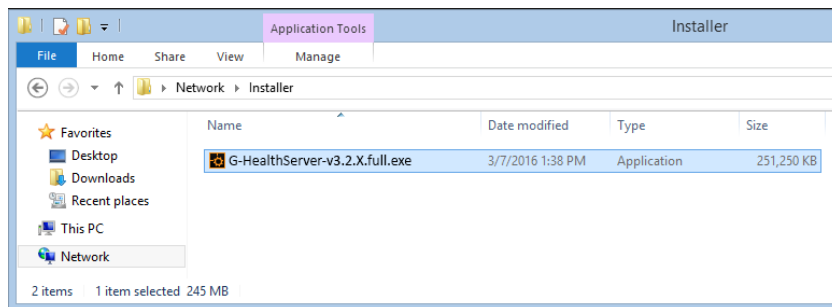
Installation G-Health Server

Getting Started

Insert the provided USB stick and the G-Health dongle into free USB slots of your computer.

1. Install the G-Health Server onto a dedicated Windows server computer.

In the explorer, please select the **USB-stick directory** and double click on the installation file **GHealthServer-vX.X.X.full.exe** to install G-Health Server.



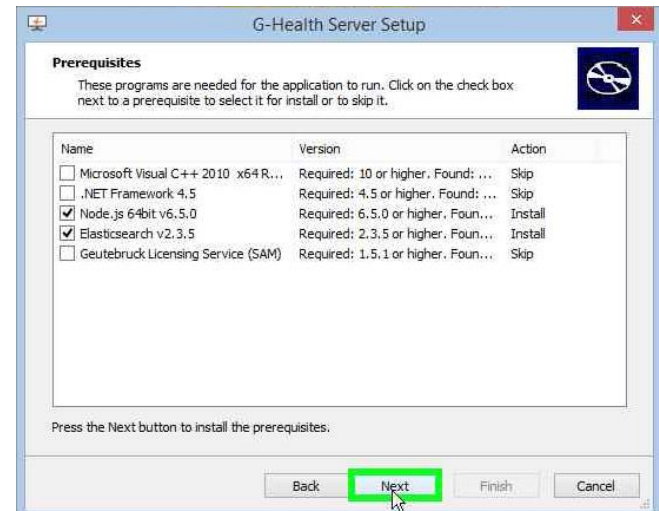


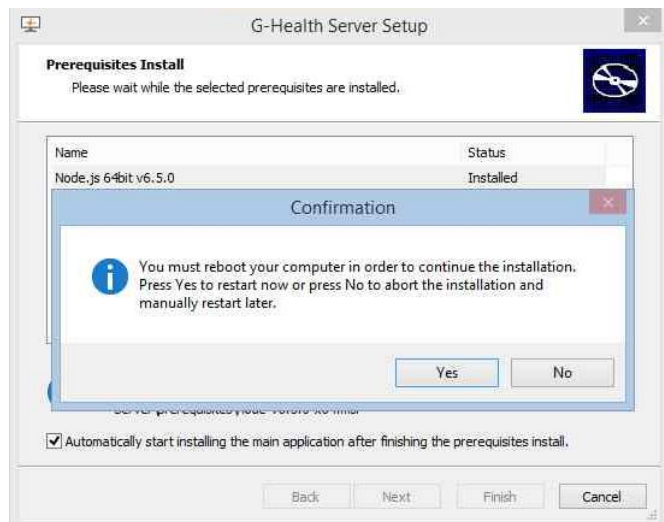
Click **Next**.

Click **Next**.

The **Prerequisites Wizard** starts and checks, if all required software components are available.

Missing components will be installed automatically during the installation.



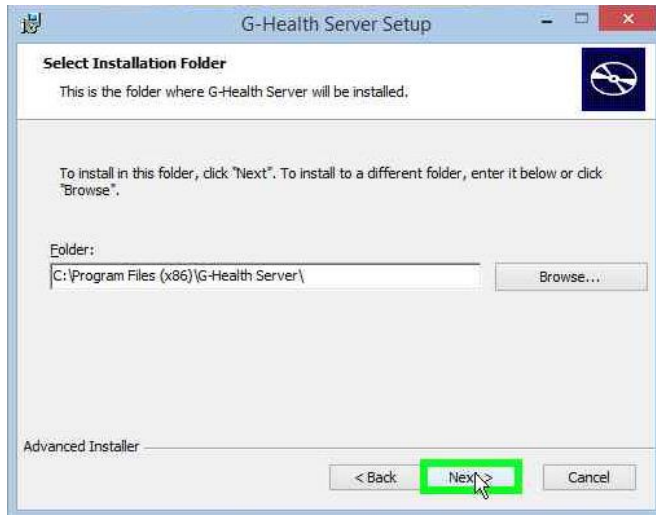


Click **Yes** to reboot your computer

After rebooting,
the G-Health Server installation begins.

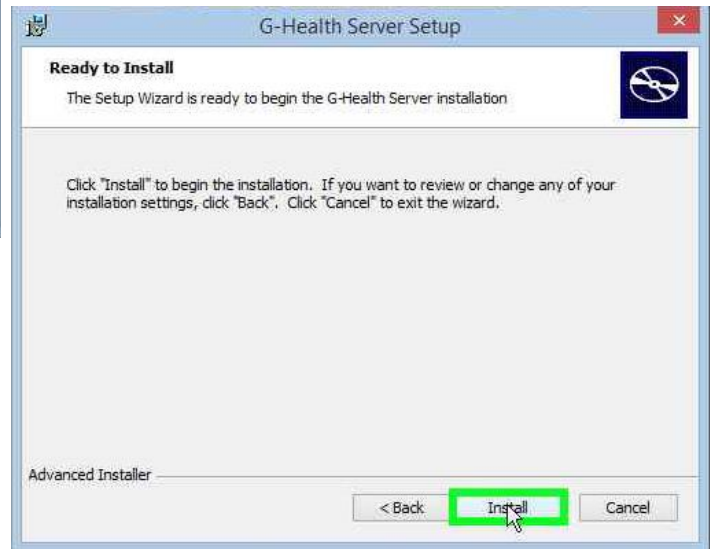
Click **Next**.

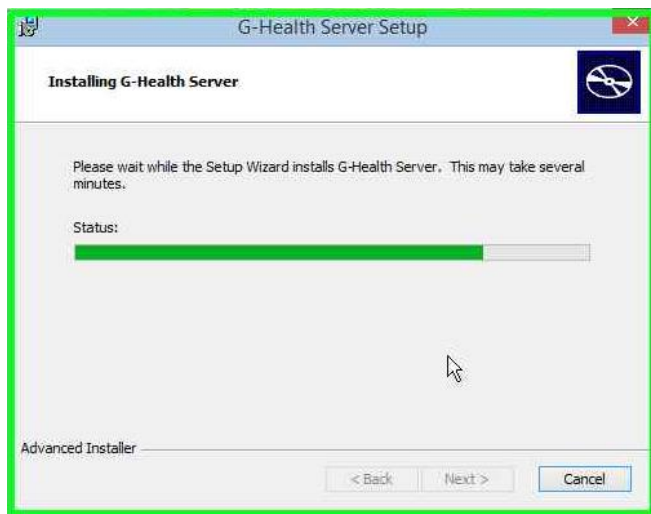




Choose the installation directory and lick **Next**.

Click **Install**.

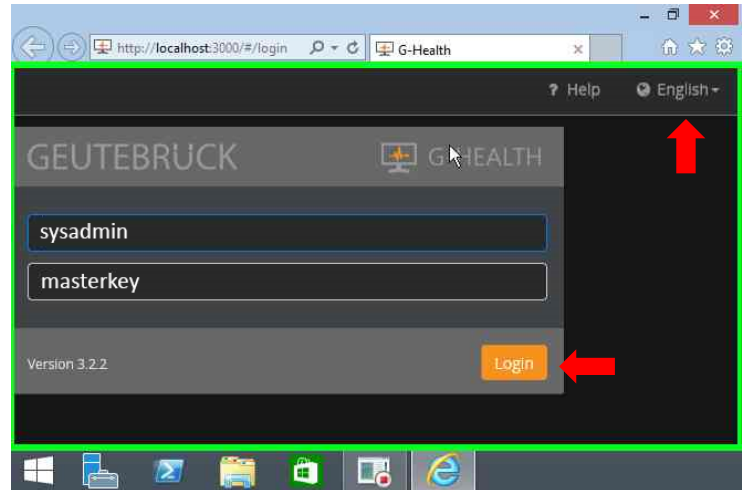




Click **Finish**.



2. Open a compatible web browser and navigate to - **http://[server]:3000/** where **[server]** is the network address of the G-Health server.
3. If required, change the language using the language selection drop down at the top of the page.
4. Login to the web interface with the default credentials.
Username: sysadmin
Password: masterkey.
5. Change the **default password** and configure the server settings for **Alarms** and **Email server settings**.
6. Go to the server license section (**Settings -> Server Settings -> Licenses**).
Here you can find the amount of enabled clients on your dongle.
7. Modify the System Administrator user profile or set up a new user to set the email address for alarm notifications.



Installation G-Health Client

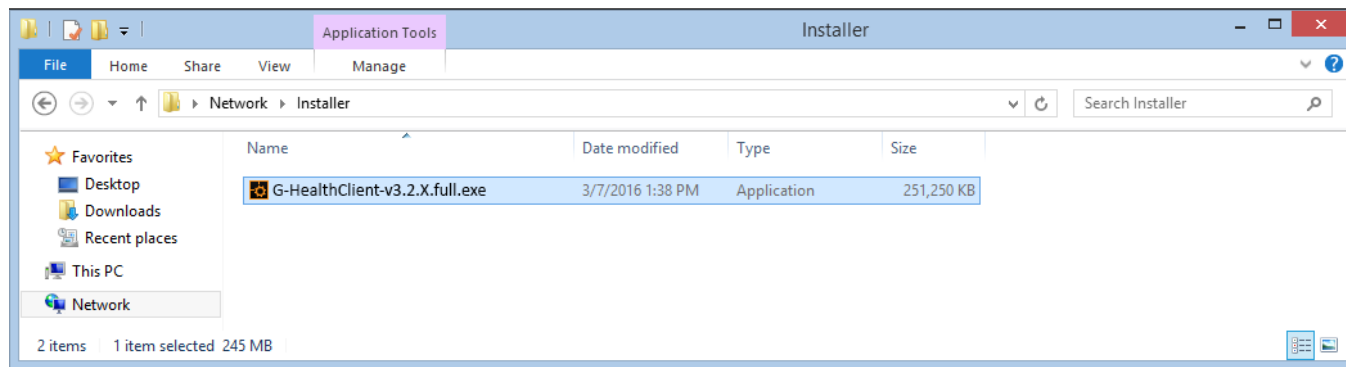
The G-Health Client should be installed on a computer running the GEUTEBRÜCK NVR software.

The prerequisite for G-Health Client the following software components must be installed on this computer:

- Microsoft .NET 4.5

8. Install the G-Health Client onto a GEUTEBRÜCK NVR computer.

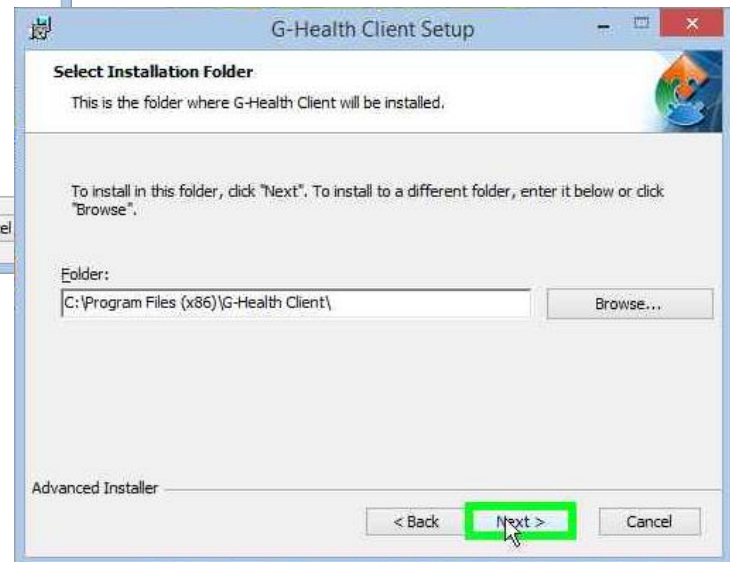
In the explorer, please select the **USB-stick directory** and double click on the installation file **GHealthClient-v3.2.x.full.exe** to install G-Health Client.





Click **Next**.

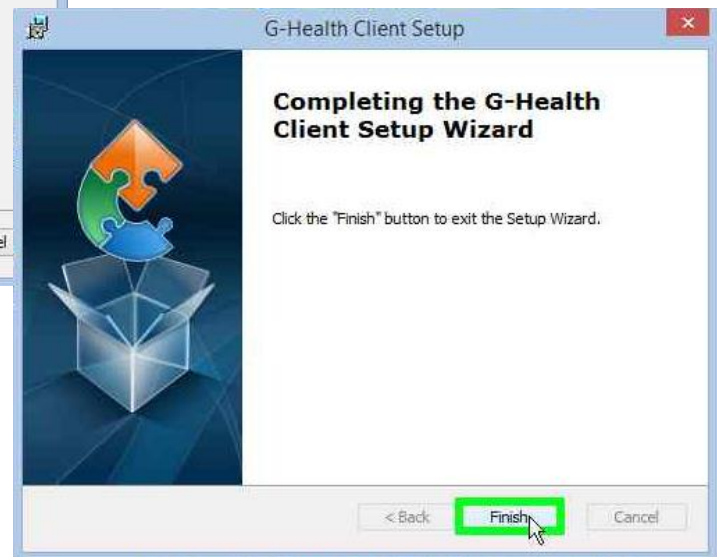
Please select an installation directory and click **Next**.





Click **Install**.

Please click **Finish**.



9. Register the client to the server using the **G-Health Client Registration Tool**.

Registering the G-Health Client

The G-Health client must be registered to a server before it will start monitoring the NVR.

To register the client:

1. From the Start menu, please open the **G-Health Client Registration Tool**.
2. Enter the **server IP address**.
3. If necessary, please enter the **NVR-User-name** and the **NVR-Password** of an user with administrator rights.
4. Start the registration by clicking on the '**Register**' button.

The G-HealthClient will attempt to connect and register with the server.

If the registration is successful then the client information will appear in the G-Health Web Interface.

G-Health Client Registration Tool - v3.2.1

File Language

Registration Information

Status: Not Registered

Server Address: 10.1.1.131

Server Port: 4002 (Default: 4002)

Server Number: 1 (Optional)

Client Number: 0

Register Deregister

Client Settings

Client Name: NET461

NVR Username: sysadmin

NVR Password:

Confirm Password:

Update Settings Cancel

Server Connection

Connection Status: Disconnected

Connect Now

Connected to the client service

G-Link Installation

Introduction

Without prior approval, this publication, in whole or in part, may not be copied, translated or transformed into a machine-readable form.

GEUTEBRÜCK GmbH assumes no liability for the accuracy of the information in this document or for the software or materials contained therein.

GEUTEBRÜCK GmbH shall not be liable for any incidental or consequential damages or special damages arising from or in connection with this documentation, regardless of whether based on prohibited actions, a contract or otherwise in connection with this documentation, the software or specifications contained or used therein.

GEUTEBRÜCK GmbH reserves the right to change this documentation and any information mentioned therein without previous notice. The software described herein is subject to the terms of a separate license agreement. (EULA).



Note that the illustrations in this document may not fit your software version.

This manual represents the current technological state of our devices. Errors and omissions excepted.

© Copyright 2018 by GEUTEBRÜCK

Detailed **information** on the **installation**, **operation** and **functions**, can be found in the **G-Link Online Help**.



Note

Install the software application **G-LinkHelp_X.exe** to a hard drive directory of your choice.

Software installation



IMPORTANT INSTALLATION NOTE

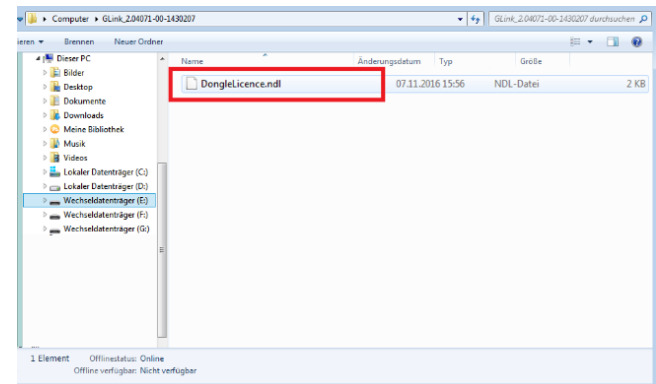
Additionally to a valid GEUTEBRÜCK G-Link-Dongle, G-Link-Server needs a valid registration file “**DongleLicence.ndl**”, which has to be present in the installation folder. Normally this file will be copied automatically by the installation process while installing from the appropriated G-Link-USB-Stick.

If several server instances of G-Link will be installed, the associated USB-Stick to every G-Link-Dongle must be taken. This ensures, that the correct registration file will be copied to the G-Link-Server-Instance.

If registration file error message “Registration File Error” is shown, something went wrong during the installation process.

The Message will be shown in three cases:

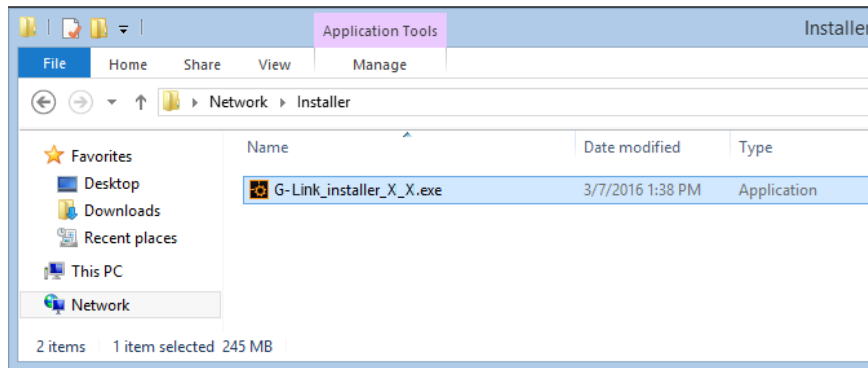
- **Reg File Not Found**
Dongle attached but no register file found
- **Reg File Found But For Another Dongle**
wrong registration file
- **Reg File Found But Different Contents**
content has changed



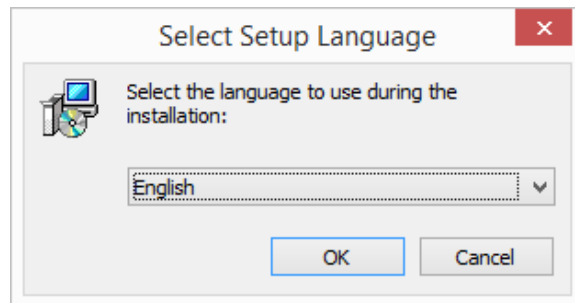
If the error message is shown, the registration file “**DongleLicence.ndl**” (see screenshot), which can be found on the **correct G-Link-USB-Stick**, must be **copied manually** into the G-Link installation folder.

Insert the provided USB stick and the G-Link dongle into a free USB slot.

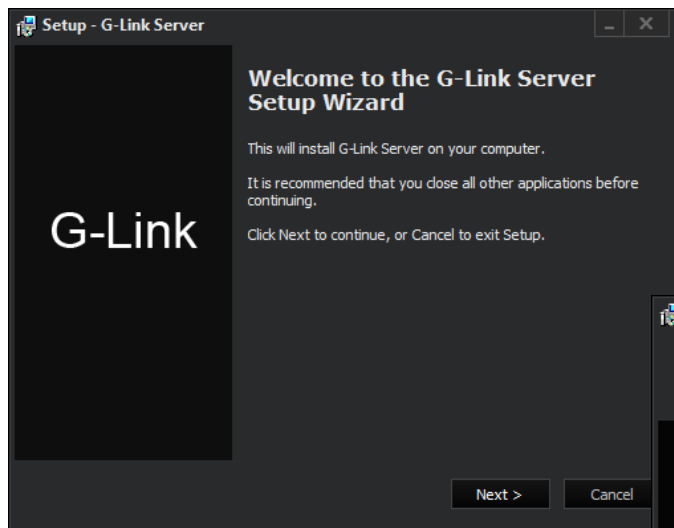
In the explorer, please select the **USB-stick directory** and to install G-Link, double click on the installation file ***G-Link_installer_X.exe***.



The installation dialog opens.



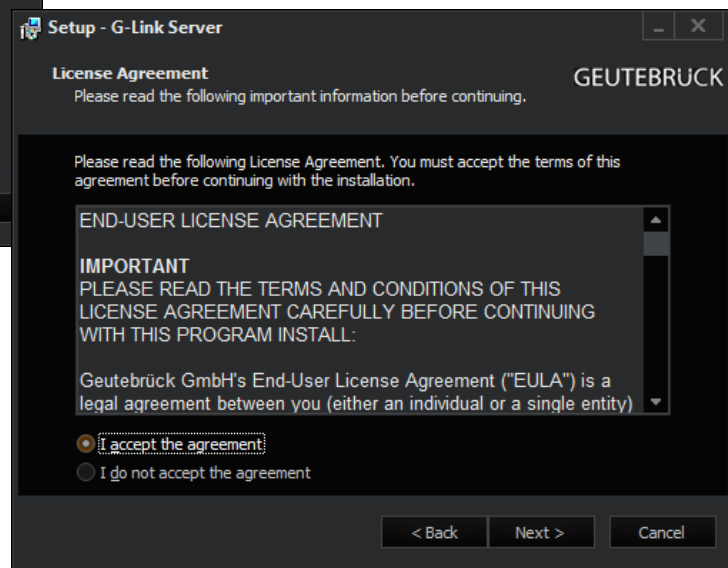
Choose your language and click **OK**.



At the Setup Wizard please click **Next**.

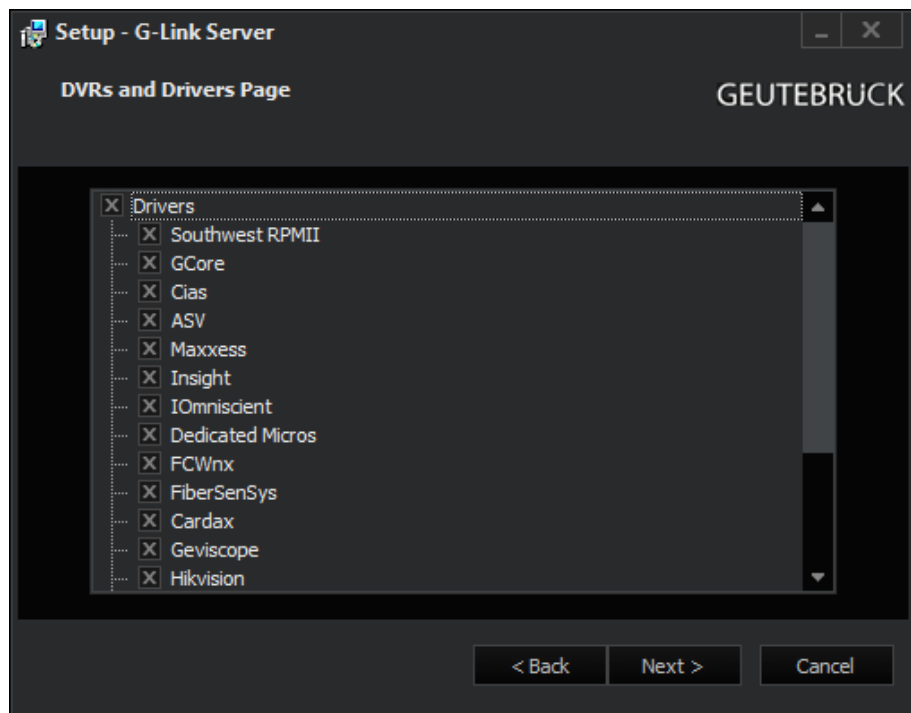
Accept the EULA
(End-User License Agreement).

Click on **Next**.

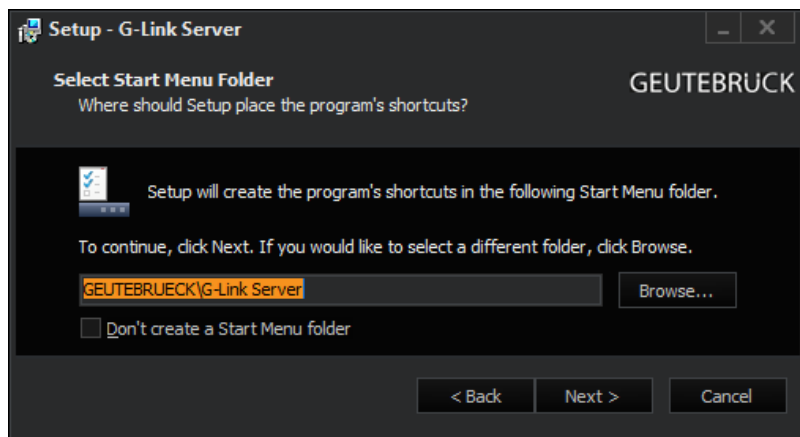


Choose the components you want to install.

For an initial installation, select **everything**.

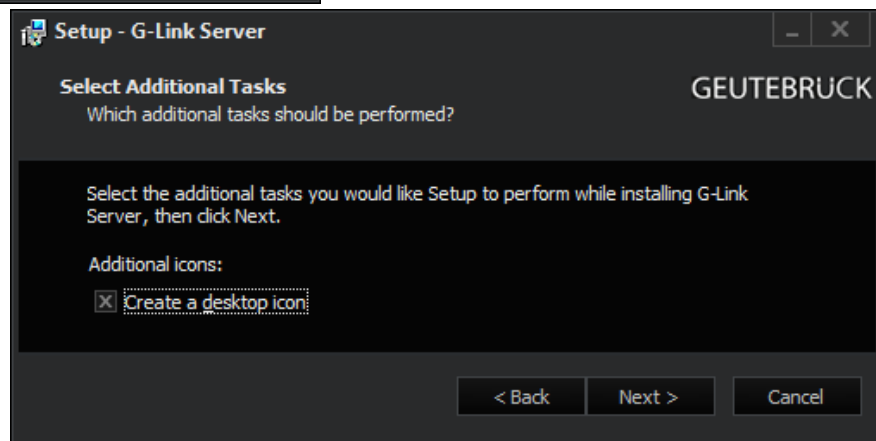


Click **Next**.

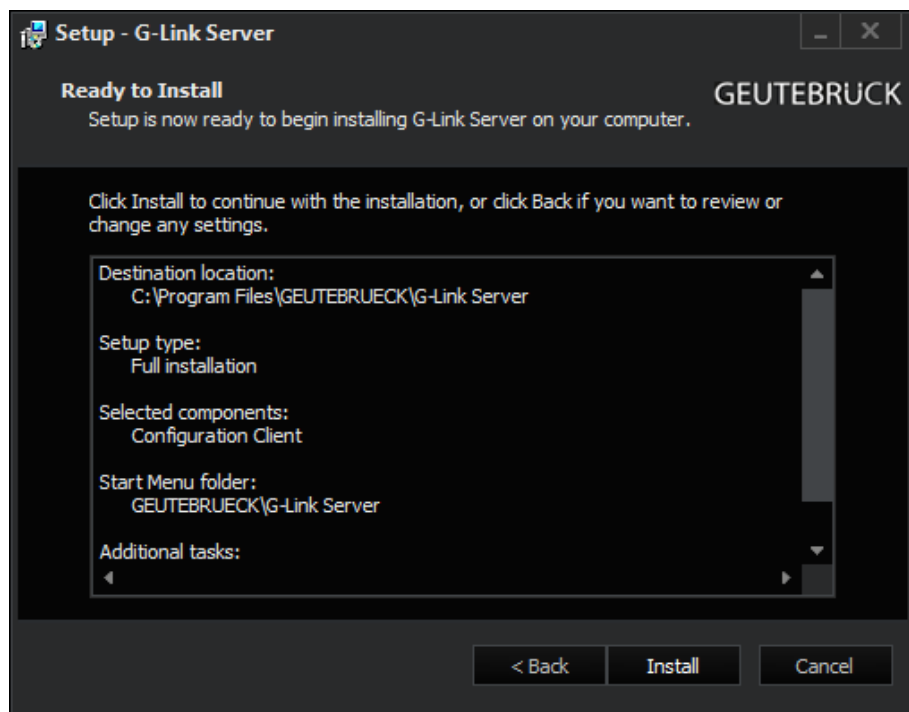


Select your start menu folder and click **Next**.

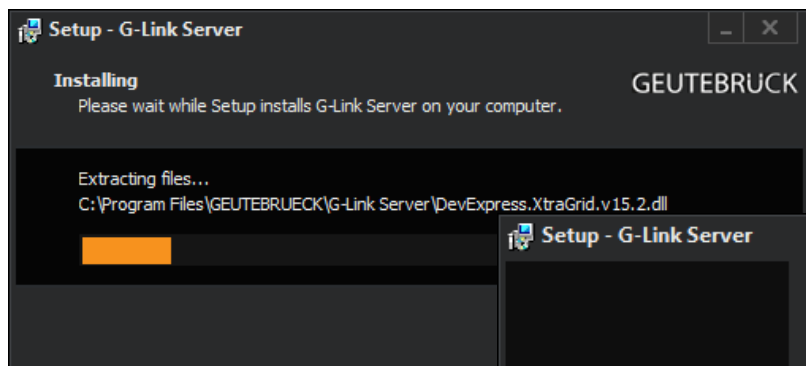
Click **Next**.



G-Link Setup got now all information for the installation.

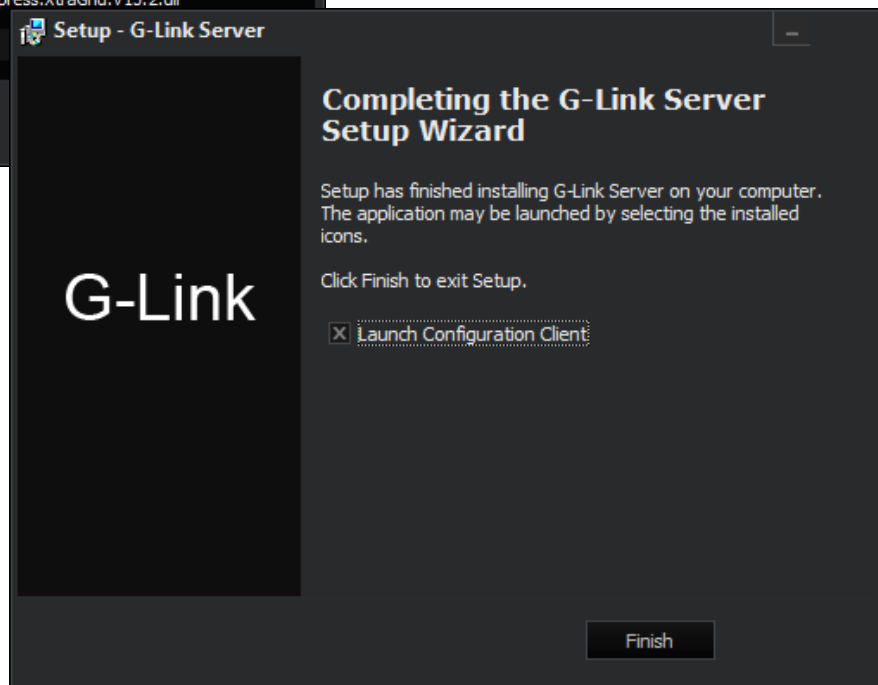


Click **Install**.



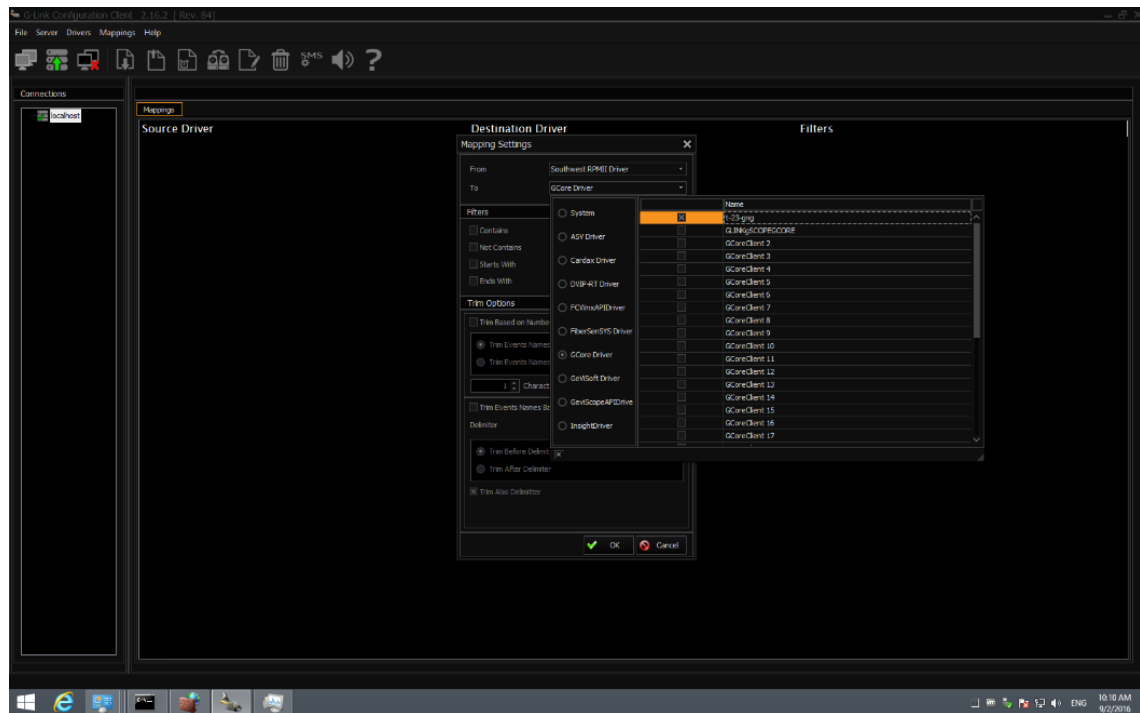
During installation please **don't touch** any key.

When the installation is completed, the following dialog appears:



Click **Finish**.

The G-Link Configuration Client opens.



Please configure and map your interfaces here.

Please **save** your **settings**. The Installation is now completed.

After installation, please **reboot the system**

GEUTEBRÜCK

GEUTEBRÜCK GmbH

Im Nassen 7-9 | D-53578 Windhagen

Tel. +49 (0)2645 137-0 | Fax-999

info@geutebrueck.com

[**www.geutebrueck.com**](http://www.geutebrueck.com)

Technische Änderungen vorbehalten.

Technical alterations reserved.

Sous réserve des modifications.

Suministro sujeto a modificaciones técnicas o disponibilidad.