

# G-Case/JBX Junction Box Quick Start Guide

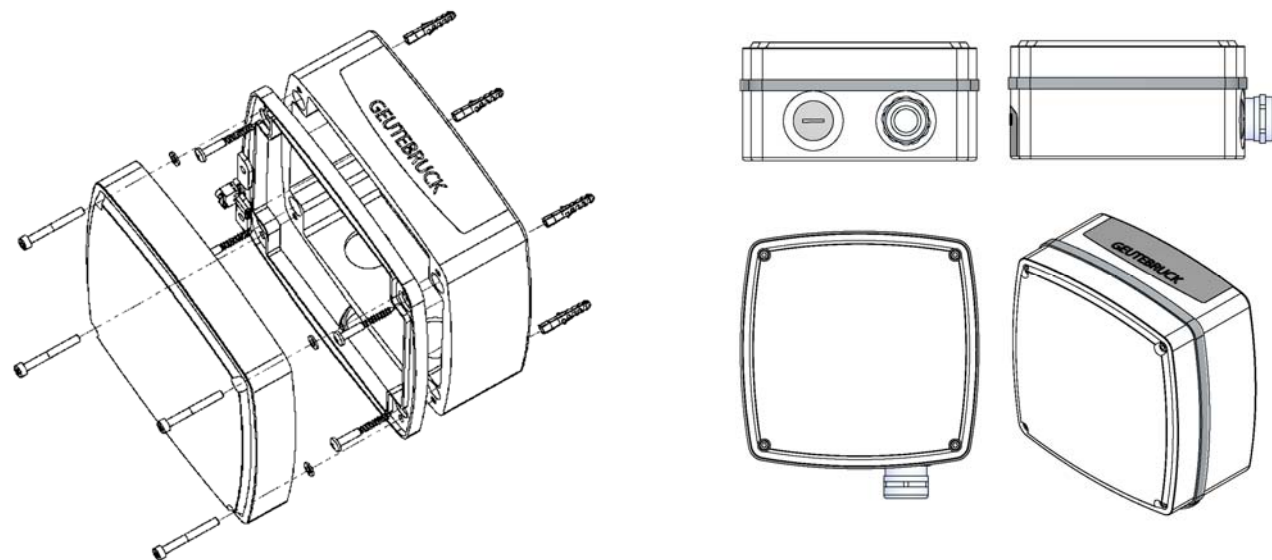
This Quick Start Guide shows how to install and connect the junction boxes of the G-Case/JBX series.

## G-Case/JBX versions



**Note:** The here explained method for mounting the camera onto the box cover has to be done **before cabling** inside the box!

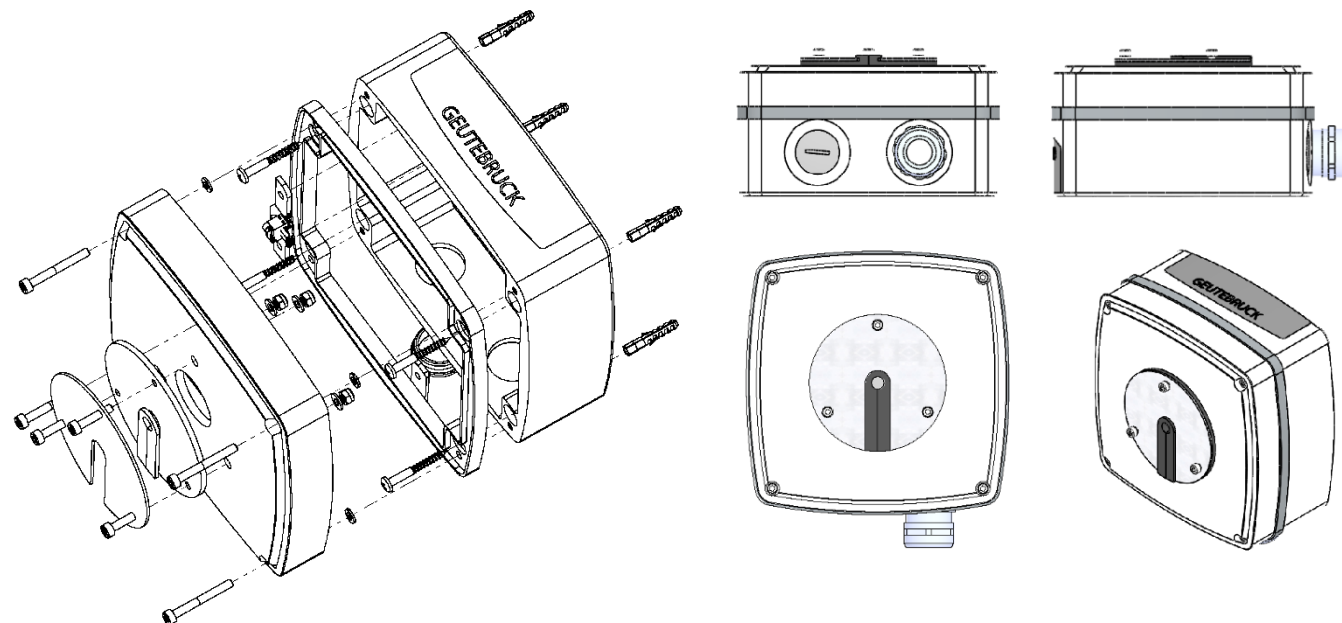
## Installation of the standalone junction box G-Case/JBX-0100 / -0101 (w/o direct camera mounting):



For this installation you only need the screw anchors and screws in the accessory bag.

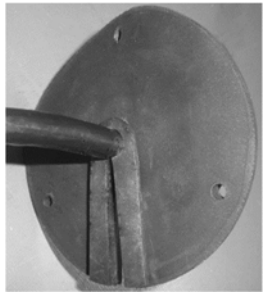
This installation method is valid for both versions of the G-Case/JBX-01xx:

## Installation of the junction box G-Case/JBX-0110 / -0111 as bullet camera socket (G-Cam/EWPC-3xxx):

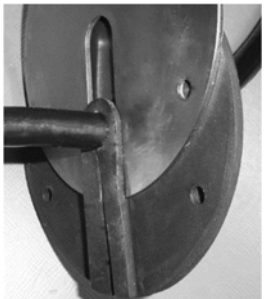


Please follow these instructions for correct installation:

**Step 1** Pull the camera connection cable through the rubber seal slot into its center.



**Step 2** Push the metal plate from the top into the rubber guide...



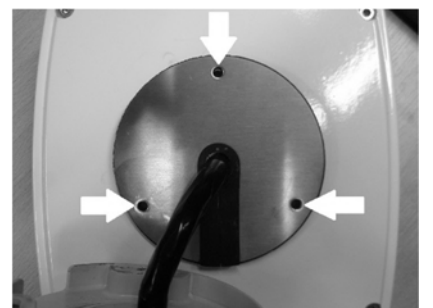
**Step 3** ...until it is congruent with the rubber seal.



**Step 4** Slide the breakout cable through the drilling hole of the box cover.



**Step 5** Place the rubber seal onto the box cover, until it is congruent with the three drilling holes and the embossed rear side of the seal disappears in the box cover. Pull the cable back through the box cover, so that the camera socket fits on the rubber seal. Take the three screws of the accessory bag and stick them through the drilling holes (see white arrows). Secure these screws with the self-locking nuts on the rear side of the box cover.



This cover should now be tight with the camera socket.

Hang up this combination in the holder as shown here to connect the breakout cable in the JBX.



**Step 6** Cabling now is very easy. The micro switch against tampering (white arrow) is standard equipment.

**Step 7** Connection on the optional network plate:

1 = Tamper switch

Cable colour:

Cable clamp 1 green

Cable clamp 2 white

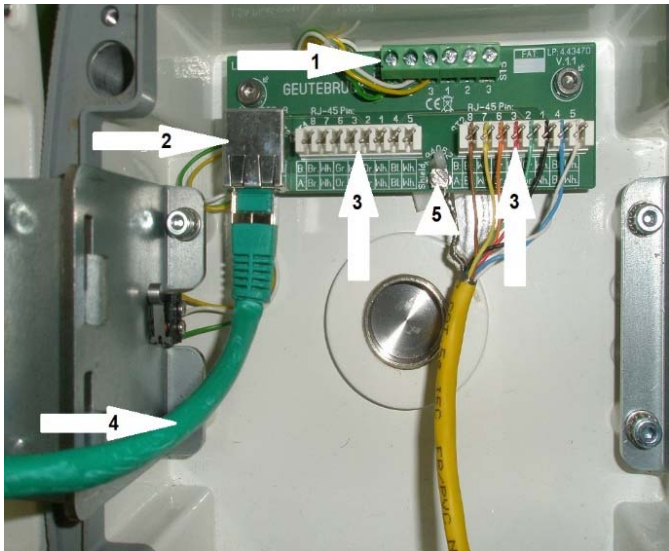
Cable clamp 3 yellow

2 = RJ45 plug

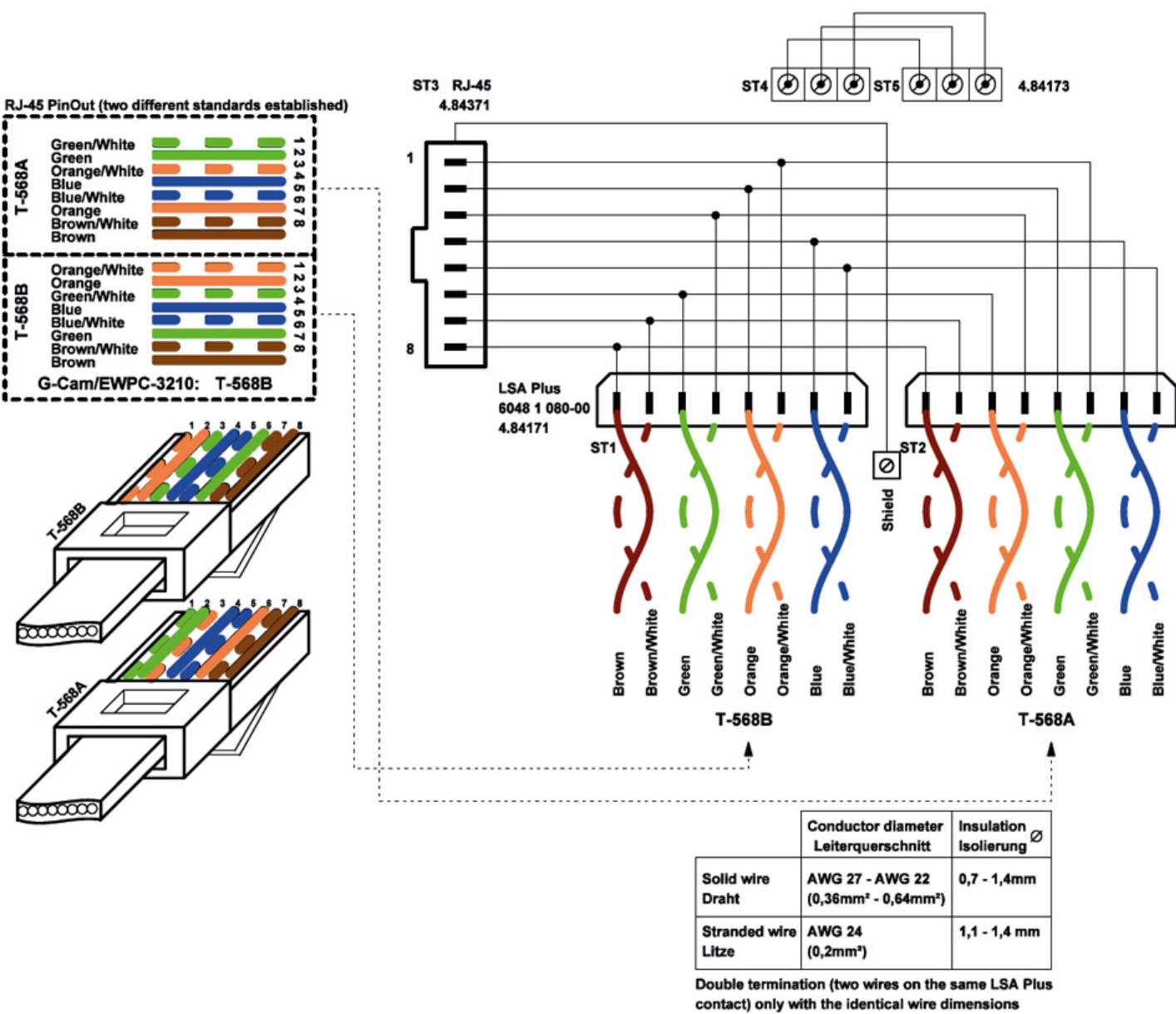
3 = LSA-Plus contact for external network cable and open network cable to the camera

4 = Network cable to the camera (camera breakout cable or cable in accessory bag)

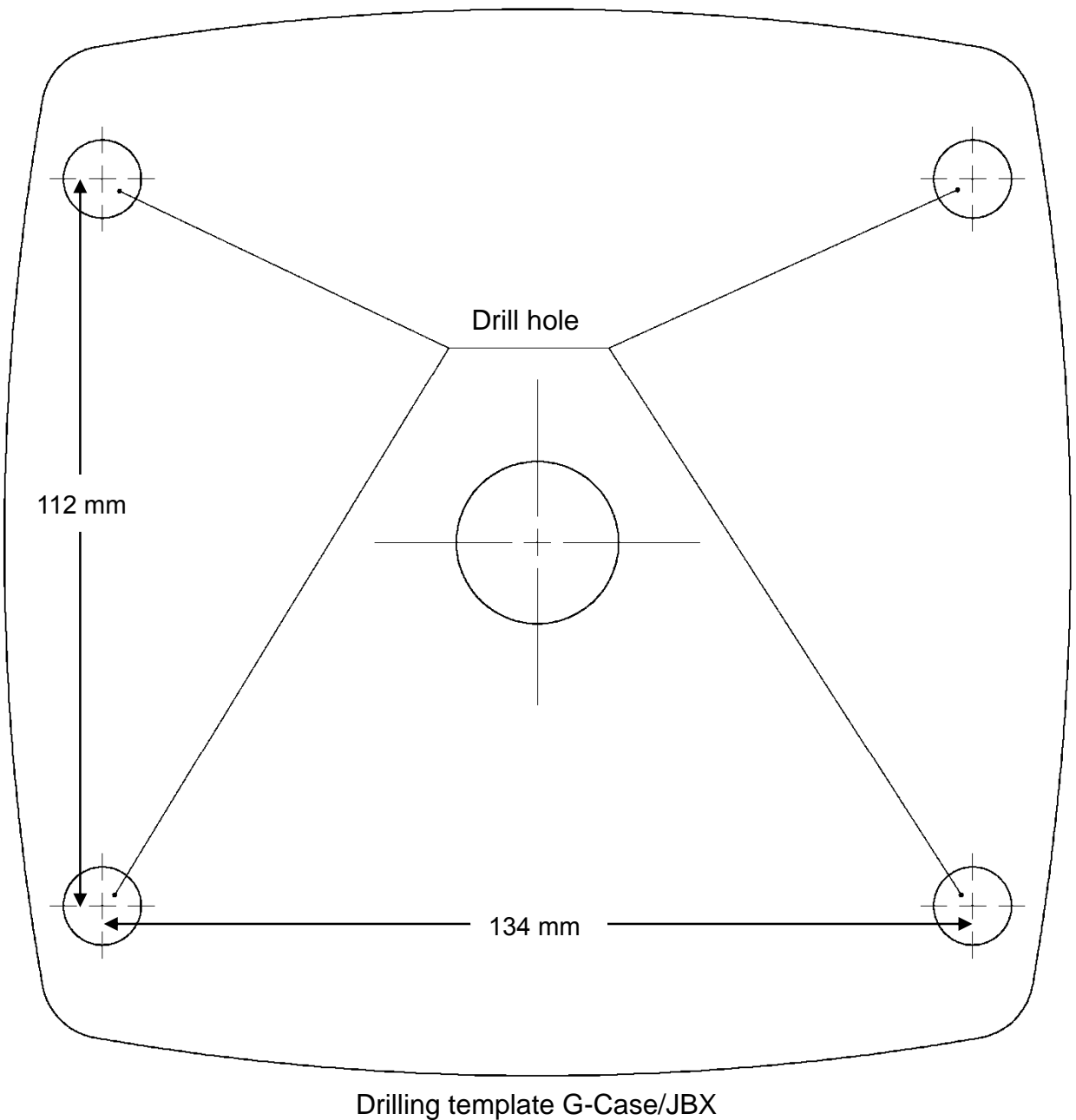
5 = Shielding of the external network cable



**Connection plan of the LSA-Plus contact**



GEUTEBRÜCK



**G-Case/JBX-01xx**  
Junction box for  
G-Cam/E series cameras

**Quick Start Guide**