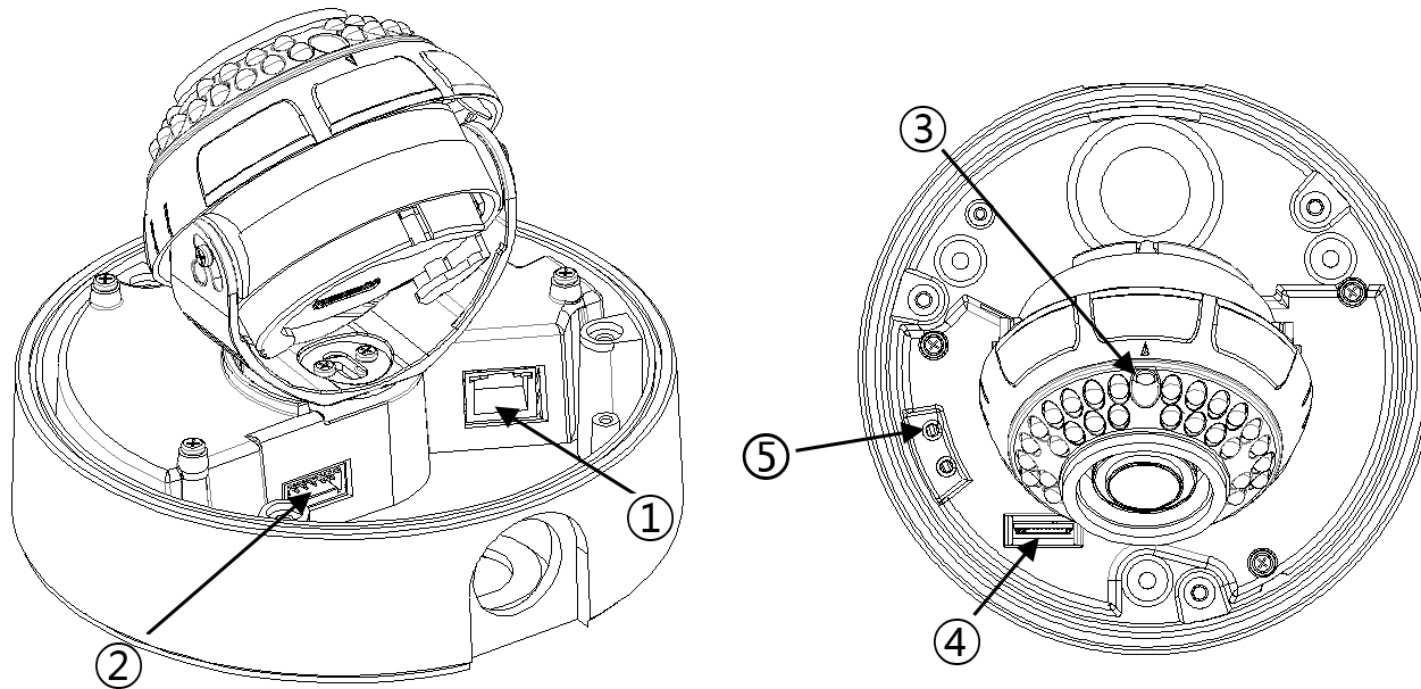


This guide is for quick installing and connecting the G-Cam/EFD-2251 in-ceiling IP camera. For more details, please refer to the User's Manual in the supplied CD.

Camera's Connectors



Nr.	Connector	Pin	Definition	Remarks
1	RJ-45			For network and PoE connections
2	Not in use	1	X	Alarm connection
		2	X	
	Alarm & Audio I/O*	3	Alarm Out -	
		4	Alarm Out +	
		5	Alarm In -	
		6	Alarm In +	
		7	Audio Out	Audio Out
		8	GND	common ground audio
		9	Audio In	Audio In
	Power (DC 12V)	10	12 VDC -	Power connection
		11	12 VDC +	
3	CDS light sensor	-		
4	MikroSD-Kartenslot	-	Insert the microSD card into the card slot to store videos and snapshots. Do not remove the microSD card when the camera is powered on.	
5	Default-Taster	-	Press the default button with a proper tool for at least 20 seconds to restore the camera.	

*Listen only is supported by GEUTEBRÜCK DVRs!

Do **NOT connect external power supply to the alarm I/O connector of the IP camera.

NOTE: It is not recommended to record with the microSD card for 24/7 continuously, as it may not be able to support long term continuous data read/write. Please contact the manufacturer of the microSD card for information regarding the reliability and the life expectancy.

Camera Cabling

Please follow the instructions below for cable connections and configuration.

Power Connection

Please use a DC 12V power adaptor and plug it to the camera and the power outlet. Alternatively, connect the ethernet cable to the camera's RJ-45 port and plug the other end of the cable into a PoE switch (IEEE 802.3af, 15.4 W).

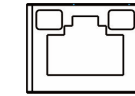
NOTE: If PoE is used, make sure PSE is in used in the network.

Ethernet Cable Connection

Connect one end of the Ethernet cable to the RJ-45 connector of the camera, and plug the other end of the cable to the network switch or PC.



NOTE: In some cases, Ethernet crossover cable might be needed when connecting the camera directly to the PC.



Green Link Light indicates good network connection.
Orange Activity Light flashes for network activity indication.

Set up network environment

Be sure that the device and PC are on a same area network before running the installation.

User name: **root** Password: **admin**

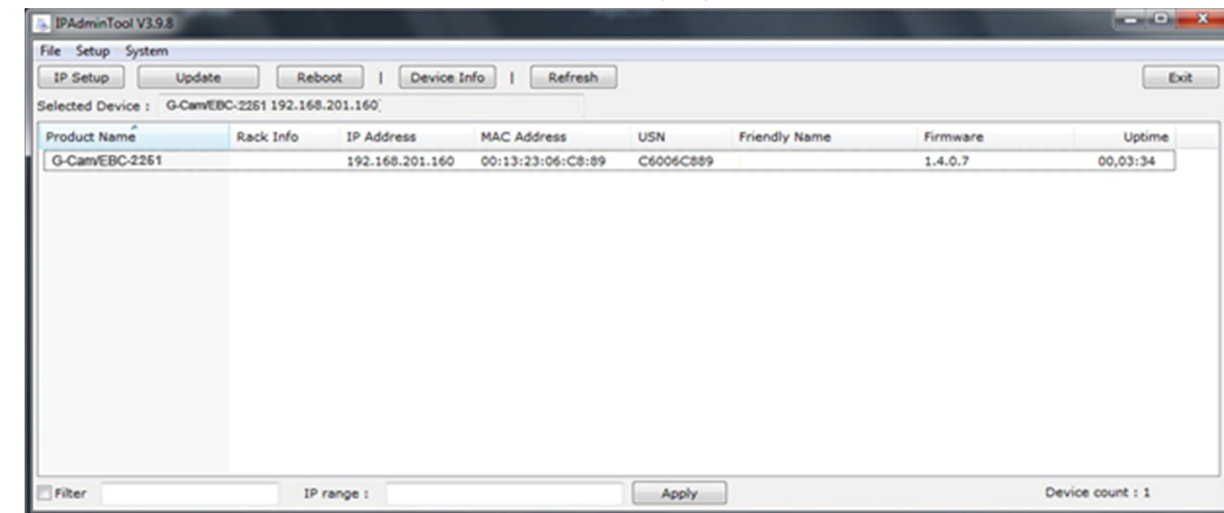
Custom IP Environment

IPAdminTool is provided on attached CDRom.

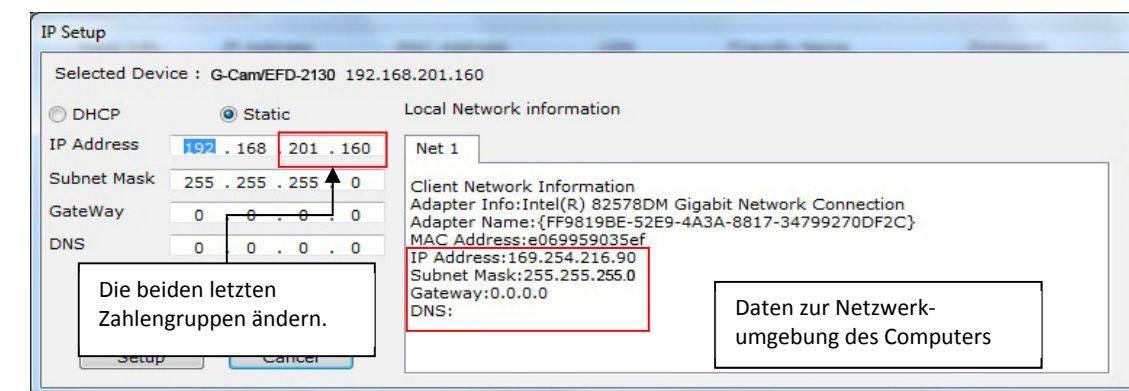
IPAdminTool is a management tool, which automatically scans all of the network products for users to perform administrative tasks, which includes network configurations, firmware update, device reboot, and device organizations.

To modify the device's default IP address for customized network area:

- Find the device from the IPAdminTool's list and highlight the device's name.



- Right-click the mouse and select "IP Address"; IP Setup window appears.



- In the IP Setup's window, information under 'Local Network information' displays the user/PC's network area information. Those information need to be incorporated to the IP Address, Subnet Mask, Gateway, and DNS boxes, except the last 2 sets of IP Address, which are to be the unique numbers for the device. Refer to the image above for the setting
- Click 'Setup' to complete the modification.
- Start the Microsoft® Internet Explorer web browser and enter the address of the device.

6. Web streaming and device configurations are supported through ActiveX program. When the ActiveX installation window appears, authorize and install the ActiveX.

View video on web page


Once the device's proper IP address has been identified, type the URL in a web browser to access the camera. At first time access, installation window may pop up.



1. When the browser asks to install the AxUMF software, click "Install" to proceed.



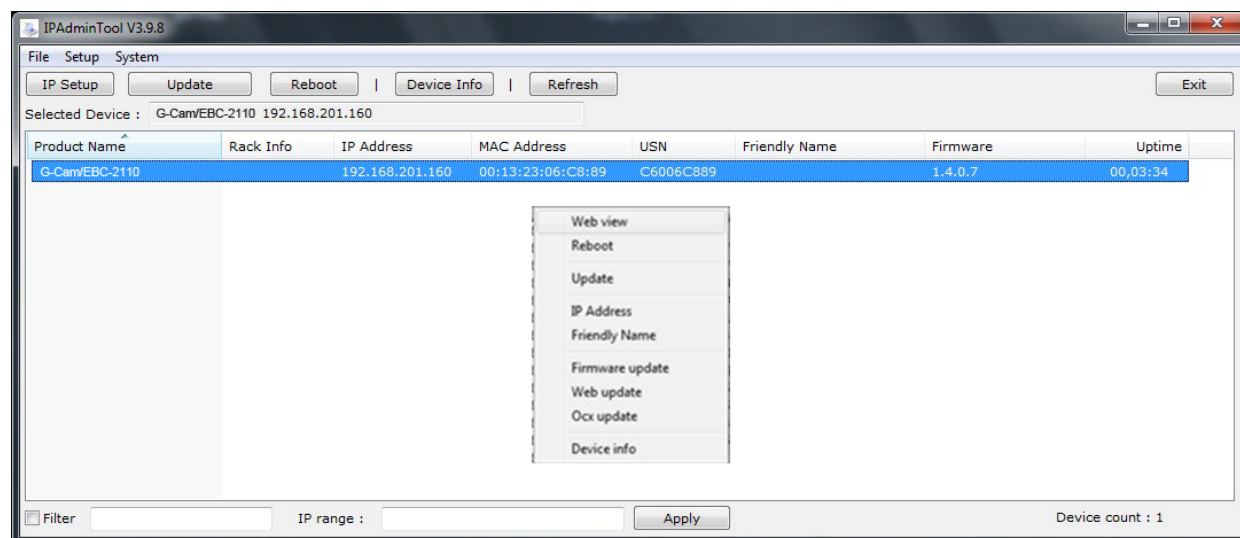
2. When Setup installation pop-up window appears, click install to proceed with rest of installations.

 Depends on OS and Internet Explorer version, Installation experience may differ from one another. Figures described above are from Windows 7, Internet Explorer 9 environment.

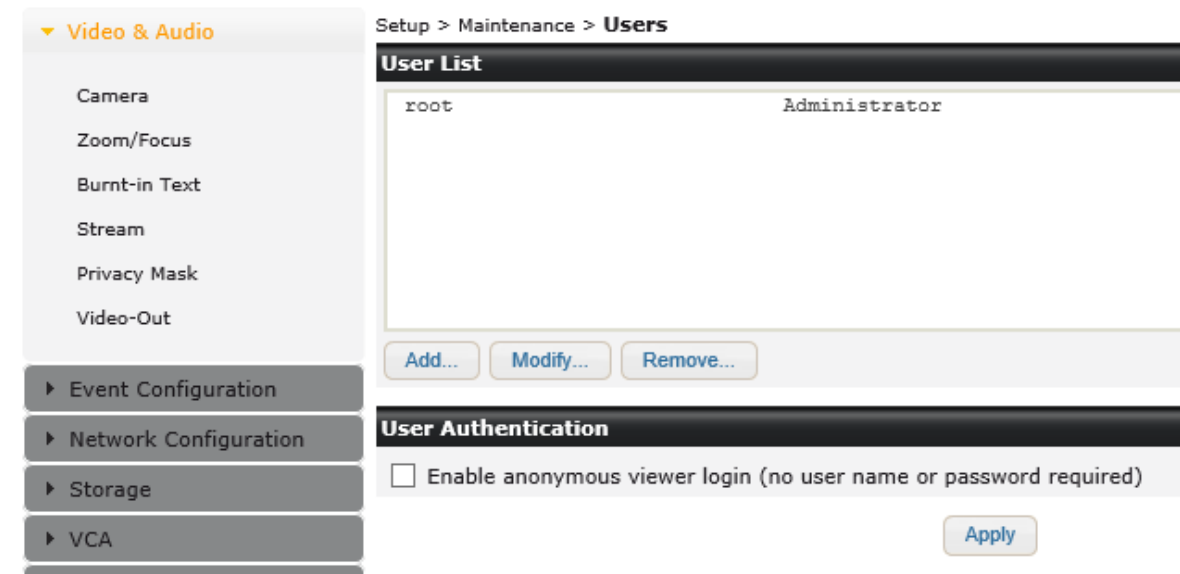
View video using IPAdmin Tool


IPAdminTool automatically searches all activated network encoders and IP cameras and shows the product name, IP address, MAC address and etc. IPAdminTool is provided on attached CDRom.


- From the IPAdminTool's product list, select the device by highlighting it.
- Right-click the mouse and select **Web view**



3. The system's default web browser opens the device's address.




 Whether directly accessing the streaming video through typing IP address on a web page or taking steps through IPAdminTool, the ActiveX is needed to be installed for the Microsoft® Internet Explorer to have the complete configuration privileges.

 **NOTE:** For details about configuring the camera in GEUTEBRÜCK-Software (**G-Set** and **GSC-Setup**), please refer to the Quick Guides, which can be found on the supplied CD ROM

Reset of the Camera


Camera

- While the device is in use, press the Reset button.
- Wait for the system to reboot.

 Do not press the reset button longer than 2 seconds, otherwise the camera may be switched to its factory default settings.

Webpage

- Go to **Setup > Maintenance > Reboot**.
- Click **Reboot**. A dialog box opens to ask you if you really want to reboot.
- Click **OK**, and wait for the system to complete booting.

 **NOTE:** In both cases it may come to a timeout. Refresh the homepage by pressing F5 button or the refresh icon in the IE's input box.

Factory Default

When reset the device to the factory default setting, all parameters including the IP address will be initialized.

- While the device is in use, press the Reset button for 10 seconds.
- Wait for the system to reboot.

The factory default settings are described as below:

IP address: 192.168.xxx.yyy
Network mask: 255.255.0.0
Gateway: 192.168.0.1
User ID: root
Password: admin