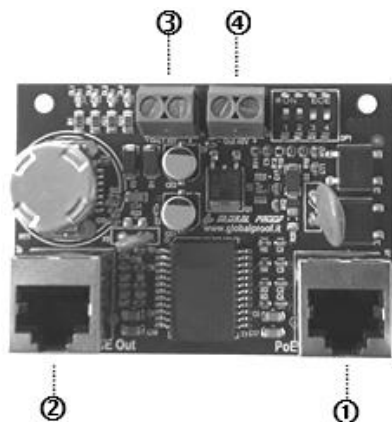


Abb. 3



POS.	DESCRIPTION
①	RJ45 input PoE+
②	RJ45 output PoE for camera
③	output power for heater
④	output 48Vdc

#### IR-LED illumination

The IR-LED illumination is already pre-assembled and adjusted.

The power is set to "maximum". If it is necessary to reduce the luminosity, detailed instructions are given in the installation manual available on the data medium.

#### Lens configuration

With the varifocal lens already mounted, the angle of view can be adjusted to your requirements.

Select the optimum image section by turning the zoom control.

Adjust the sharpness of the lens by turning the focus control. Define an area in the field of view in which the focus range should be located

#### Validity of the Documentation

This documentation is applicable for G-Cam/ANPR 49xx.

These instructions represent the technical status of the device at the time of publication. Errors and omissions excepted.

Geutebrück reserves the right to make changes without prior notice.

#### EU Declaration of Conformity

This device complies with requirements according to the following EU regulations:

- Regulation for electromagnetic compatibility (EMC) 2014/30/EU
- Low Voltage Regulation 2014/35/EU
- RoHS-Regulation 2011/65/EU



The currently valid version of the EU Declaration of Conformity can be found here:

<https://t1p.de/l7klm>

## G-Cam/ANPR 49xx

### Quick Installation Guide

G-Cam/ANPR-4900 (0.02491)

G-Cam/ANPR-4901 (0.02492)

#### User Manual G-Cam/ANPR 4900-4901

A user manual with a description of the device and additional information on its use can be found here:



<https://manuals.geutebrueck.com/>

## General Safety Instructions

### Commissioning

The device may only be commissioned by qualified personnel who are familiar with the device and the technology.

Make sure that all applicable safety requirements are fulfilled.



### WARNING

#### Electrical voltages!

Personal and property damage

- ▶ All connection work should only be performed on the device when it is switched off.
- ▶ Do not remove the housing cover.

### Operation

When operating the device, the local applicable laws, other regulations, standards, and rules of technology must be observed. In the interest of a safe work process, operating company and supervisors are responsible for their compliance. During all work, check the device for any damage. All parts must be correctly mounted and fulfill all conditions to ensure proper operation.



### WARNING

#### Electrical voltages!

Personal and property damage

- ▶ Do not use the device if it is damaged.
- ▶ Disconnect the device from the power supply.

### WARNING

#### Electrical voltages!

Personal and property damage

- ▶ Disconnect the device from the power supply during all repair and maintenance work.
- ▶ Work on the electrical equipment may only be performed by a qualified electrician.



### CAUTION

#### Danger due to the use of non-original parts!

Personal and property damage

- ▶ Only use original spare parts.



### WARNING

#### Explosion hazard!

If the mainboard battery is replaced by an unsuitable battery type, explosions may occur.

- ▶ Make sure that a suitable battery type is used.
- ▶ Dispose the battery according to the valid legal requirements and local regulations.

- Fix the bracket in the required position (1) Fig.1 by means of screws of diam. 8 mm with special small blocks.
- Unscrew the screws of the left side (2) Fig. 2 and open the housing. The top cover has a rotation of 180°.
- Unscrew the 4-fastening screw of internal slide and remove it by movement on rear direction (fig.3).
- Insert the Ethernet cable through the cable gland M25
- Connect the Ethernet cable to the splitter. Fig.3
- Close the housing by following the opening opposite procedure and fasten the 2 screws on the left side of housing.
- Then clamp appropriately the cable-gland.

Fig. 1

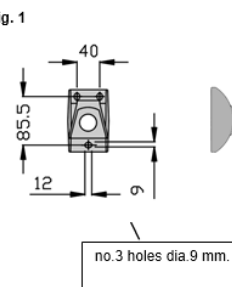
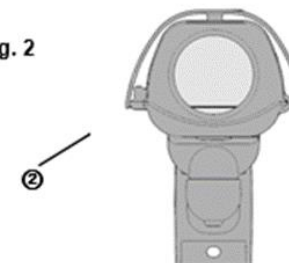


Fig. 2



Do not use the supply cable for purposes for which it is not intended. Protect the cable from heat, oil, and sharp edges.

In dangerous situations or in case of malfunctions, disconnect the device from the power supply immediately.

### Package Contents

Housing included IR pass filter, Splitter, Wall mount bracket with concealed cable guide, IR-LED illuminator, Camera G-Cam/EBC-5101, Lens depending on customer selection, Quick installations guide