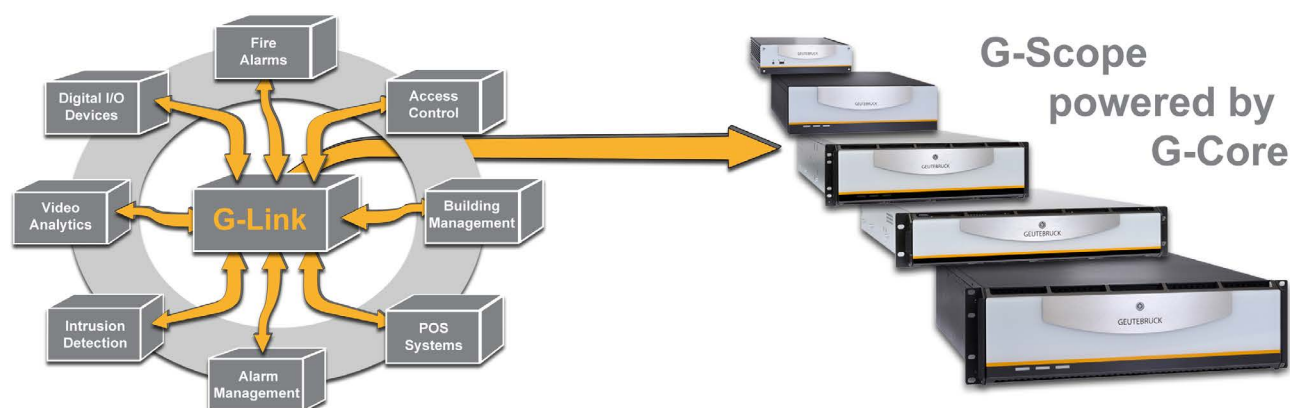


G-Link integration server

Central platform for integration of third-party systems



System-wide event processing and operation – tested and convenient.
 The integration of a wide range of third-party systems can be so simple.

In our experience, the integration of specialized security systems increases the effectiveness of a modern video security system and saves the user from time-consuming, parallel handling of multiple, separate systems from different manufacturers with different operating concepts.

The fire alarm system controls video activation; the lock system starts image archiving; number plate recognition opens the gate. For this to happen, the exchange of data between the individual systems must be coordinated.

The different manufacturers of the systems use their own interface protocols and control commands, meaning that it is often not possible to realize a direct link without a corresponding interface that translates the commands back and forth.

This kind of interface between two systems often needs to be developed based on the specifics of the order, a time consuming and costly endeavor. In addition, an independent interface is required for each of these links.

As an installer or system integrator, you are well aware of the costs and challenges to providing an accurate cost estimate.

G-Link - the GEUTEBRÜCK integration server

All interfaces, centralized on one server.






The G-Link integration server is the central platform for the interfaces of all third-party systems connected to the system.

The software architecture of the internal API (Application Programming Interface) connects all interfaces equally as plugins, which can be purchased and activated as a G-Link software option (dongle).

The special feature is that every connected system can communicate in parallel with every other or multiple systems and third-party systems.

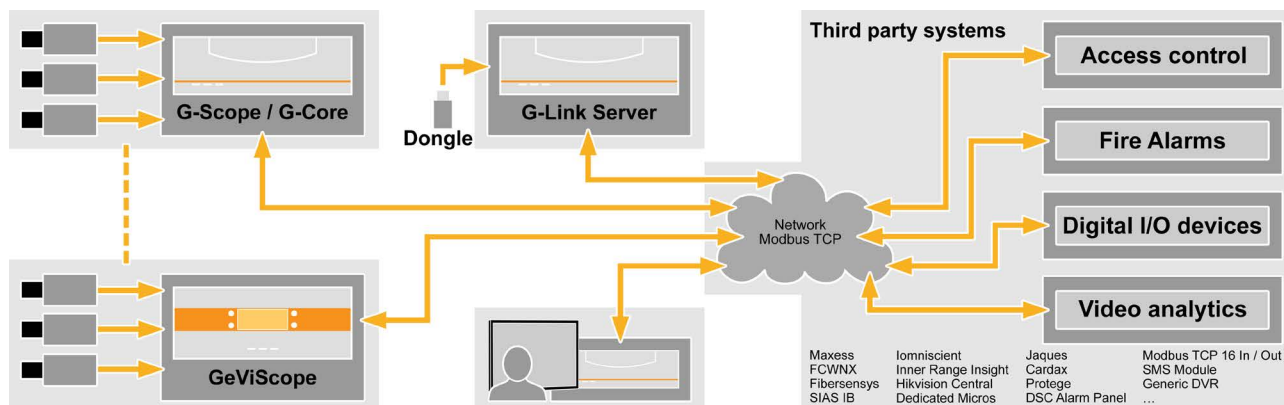
This software architecture opens up a wide range of cross-system functionality that was previously difficult or impossible to realize with separate individual interfaces.

A summary of the benefits:

-  Central integration of third-party systems, such as fire alarm systems, access control, intrusion detection systems, video analysis, etc.
-  Central parameterization of all interfaces and the respective data exchange.
-  Open to the future integration of many more third-party systems on request.
-  Permanent, factory integration of additional third-party systems.
-  Automatic health examination of all related systems.

G-Link integration server

System overview



Rapid commissioning, simple configuration, robust functionality.
Fully automatic control of all system components and third-party systems.

The base G-Link server software is a Windows service that works without an active desktop. The software should be installed on a separate Windows server (PC) on which no other applications are running.

Optionally, a redundancy mode with two synchronized servers (computers) can be set up.

After initial installation, the G-Link server operates under full automation and connects with all integrated systems, for example, after disturbances to the network.

Configuration is performed using the multilingual TCP/IP client.

Notes on purchasing:

With your initial order, you need the base G-Link server software, including dongle, one or more GEUTEBRÜCK interfaces (G-Link software options: G-Link/Core, G-Link/GSC, G-Link/GeViSoft) and the G-Link software option of your desired third-party system.

Subsequent orders of G-Link software expansion options to include additional third-party systems are activated for your dongle ID.

Required software and options:

- **G-Link server**
Software package with its own installer, including dongle and an upgrade activation for 1 year
Order No. 3.06530
The software requires a separate computer platform.
- **G-Link/Core**
Software option to activate the interface to G-Core
Order No. 8.34172
- **G-Link/GSC**
Software option to activate the interface to GeViScope
Order No. 8.34155
- **G-Link/GeViSoft**
Software option to activate the interface to GeViSoft
Order No. 8.34156

Do you need to integrate a third-party system that is not yet listed or do you have questions about existing integrations?

Our developers in the **Integrations & SDK** department would be happy to consult you personally and answer all your questions regarding integration and interfaces

Technical changes and delivery options reserved.

GEUTEBRÜCK GmbH

Im Nassen 7-9 | D-53578 Windhagen | Tel. +49 (0)2645 137-0 | Fax-999 | E-mail: info@geutebrueck.com | Web: www.geutebrueck.com