

GEUTEBRÜCK



G-Cam/EFD-3131

Full HD Ultra-WDR Dome IP Camera

Installation

Preface

The information given in this manual was current when published. The company reserves the right to revise and improve its products. All specifications are subject to change without notice.

Copyright

Under copyright laws, the contents of this user manual may not be copied, photocopied, translated, reproduced or reduced to any electronic medium or machine-readable format, in whole or in part, without prior written permission of the company.

© 2017 by GEUTEBRÜCK All Rights preserved.

Notice



Mounting instructions for Dome Systems and permanently mounted Cameras.

Please note that the place of mounting should be stiff enough! Otherwise all VCA functions like Motion Detection, Privacy Masking, etc. either in cameras or with DVRs could be disturbed heavily and can cause unlikened and often alarms.

This manual provides the installation information for the Fix Dome IP Camera. To work with the IP Cameras, any installer or technician must have the following minimum qualifications:

- A basic knowledge of CCTV systems and components
- A basic knowledge of electrical wiring and low-voltage electrical hookups
- A basic knowledge of network system setting
- Have read this manual completely

Important Information

Before proceeding, please read and observe all instructions and warnings in this manual. Retain this manual with the original bill of sale for future reference and, if necessary, warranty service. When unpacking the unit, check for missing or damaged items. If any item is missing, or if damage is evident, DO NOT INSTALL OR OPERATE THIS PRODUCT. Contact the dealer for assistance.

Regulation



This device complies with Part 15 of the FCC Rules. Operation is subject to the following two conditions: (1) This device may not cause harmful interference, and (2) this device must accept any interference received, including interference that may cause undesired operation.



This symbol on the product or on its packaging indicates that this product shall not be treated as household waste in accordance with Directive 2002 / 96 / EC. Instead it shall be handed over to the applicable collection point for the recycling of electrical and electronic equipment. By proper waste handling of this product, please ensure that it has no negative consequences for the environment and human health, which could otherwise be caused if this product is thrown into the garbage bin. The recycling of materials will help to conserve natural resources.

For more detailed information about recycling of this product, please contact the local city office, household waste disposal service or the shop which purchased the product.



Compliance is evidenced by written declaration from our suppliers, assuring that any potential trace contamination levels of restricted substances are below the maximum level set by EU Directive 2002 / 95 / EC, or are exempted due to their application.

Warnings and Cautions

- **Handle the camera carefully**

Do not abuse the camera. Avoid striking, shaking, etc. The camera could be damaged by improper handling or storage.

- **Installing electricity wiring carefully**

Ask qualified personnel of electrical wiring for the installation. Please note the technical specifications for correct power supply at the end of this manual.

- **Do not disassemble the camera**

To prevent electric shock, do not remove screws or covers. There are no user serviceable parts inside. Ask a qualified service person for servicing.

- **Do not operate the camera beyond the specified temperature, humidity or power source ratings**

Use the camera under conditions which are described in the technical specifications.

- **Do not use strong or abrasive detergents when cleaning the camera body**

Use a dry cloth to clean the camera when it is dirty. In case the dirt is hard to remove, use a mild detergent and wipe the camera gently.

- **Never face the camera towards the sun**

Do not aim the camera at bright objects. Whether the camera is in use or not, never aim it at the sun or other extremely bright objects. Otherwise, the camera may be smeared or damaged.



Mounting instructions for Cameras.

Please note that the place of mounting should be stiff enough!

Otherwise all VCA functions like Motion Detection, Privacy Masking, etc. either in cameras or with DVRs could be disturbed heavily and can cause unliked and often alarms.

In the ceiling should be enough space above the camera so that the warmth will be well-distributed.

Dome Cover Cleaning Guide

Dirt or dust on the surface of a Dome camera can blur the image. The following describes how to correctly clean the dome cover of a Dome camera.



NOTE: If the dome cover is scratched, please contact the distributor for replacement.

Applicable Types:

- General dome cover (speed domes, fixdomes and bullet models)

Cleaning Tools:

- Rubber air blower or air gun with air compressor
- Alcohol prep pad
- Rubber gloves
- Microfiber high performance cloth
- Pre-diluted detergent (10ml of detergent with 1L of water)



NOTE: Do NOT use other fabric or cloth, e.g. paper towels, to wipe the cover; it may cause scratches on the dome surface while cleaning.



NOTE: It is strongly recommended to clean the dome cover wearing the rubber gloves, for grease and sweat will leave on the dome cover.

Kinds of dirt and cleaning methods

According to different scenarios, ways to clean the dome surface will also vary.
Refer to the following to proceed.

Scenario 1:

Only little dirt or dust is attached to the dome surface.

Solution:

Put on the rubber gloves and simply use rubber air blower or air gun with air compressor to blow off dirt or dust.



Scenario 2:

There are fingerprints or light grease on the dome surface.

Solution:

Put on the rubber gloves. Gently wipe off the dirt spot using alcohol prep pad.

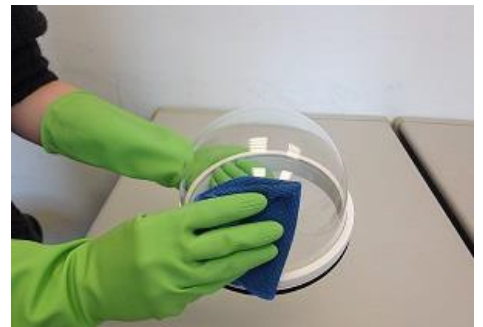


Scenario 3:

There is a huge accumulation of dirt or grease on the dome surface.

Solution:

Put on the rubber gloves. Dampen the microfiber cloth with pre-diluted detergent, gently wipe off the grease.



Then rinse the dome surface with cold water and dry it with a dry microfiber cloth.



Table of Contents

Preface	1
Regulation.....	2
Warnings and Cautions	3
Dome Cover Cleaning Guide.....	4
1. Overview.....	7
1.1 Features.....	7
1.2 Package Contents	8
1.3 Dimensions	9
1.4 Loosen of the transport locking screw	9
1.5 Default Button and micro SD card slot.....	9
1.6 Connections.....	11
1.7 Installation versions of the cable gland for IP66	11
2. Camera Cabling	12
2.1 Power Connection	12
2.2 Ethernet Cable Connection.....	12
2.3 Alarm I/O Connection	12
3. System Requirements	16
4. Access Camera.....	17
5. Setup Video Resolution	19
5.1. Configuration Files Export / Import	20
6. Commissioning in GEUTEBRÜCK Software	21
6.1 Commissioning of IP Cameras in GSC-Setup	21
6.2 Commissioning of IP Cameras in G-Set	26
Appendix A: Technical Specifications	30
Appendix B: Delete the Existing DC Viewer	32
Appendix C: Setup Internet Security	33

1. Overview

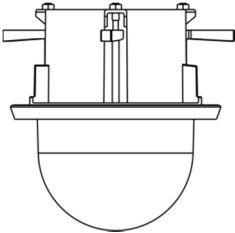
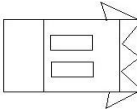
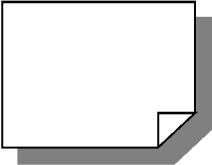

The Full HD Ultra-WDR in-ceiling Fixdome IP Camera owns an easy setup design. PoE is supported to reduce complicated cabling without losing performance. The camera also supports Shutter WDR function, which can provide better image quality under extreme light contrast scenario or light changing environments.

1.1 Features

- Sony Progressive Scan CMOS Sensor
- 2M Resolution
- Dual Streams (Quad streams available)
- Multi-language Support
- Tampering Alarm
- Ultra Dynamic Range (Shutter WDR up to 120 dB dynamic)
- Motion Detection
- Privacy Masking
- 3D Noise Reduction / 2D Noise Reduction
- Network Failure Detection
- Day/Night (ICR)
- IR LED Module (working distance up to 40 m)
- Digital Image Stabilization (DIS)
- PoE supported (IEEE 802.3af, 15.4 W)
- microSD Support (64 GB max.)
- ONVIF Support (Profile S)

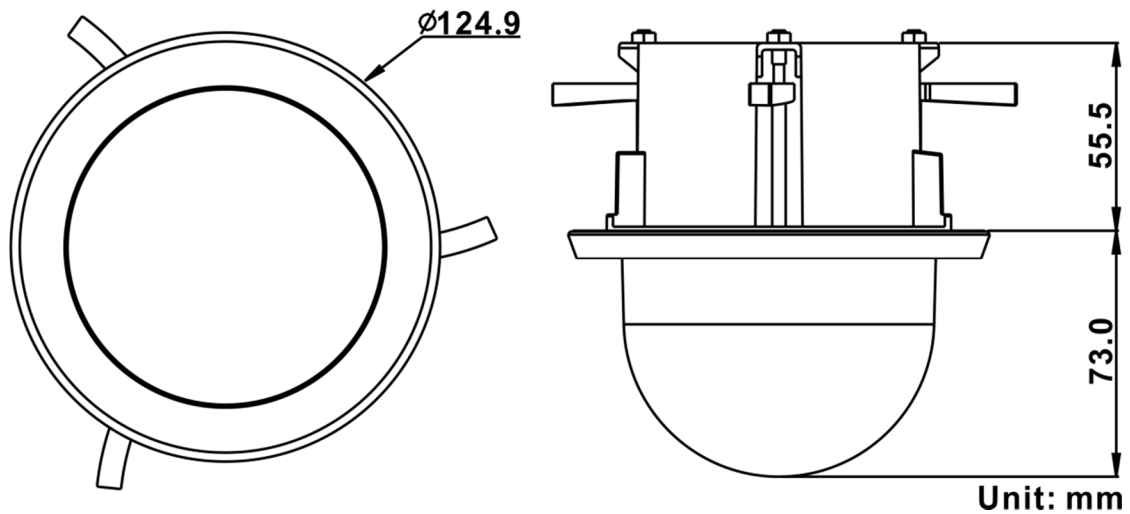
1.2 Package Contents

Please check the package contains the following items listed below.

 <p>Full HD Multi streams Ultra-WDR in-ceiling fixdome IP camera</p>	 <p>2-Pin connector for external Power supply</p>
 <p>Quick start guide</p>	 <p>CD (Software and documentation)</p>

1.3 Dimensions

The dimensions of the camera are shown below.



1.4 Loosen of the transport locking screw



IMPORTANT!



BEFORE setting the picture section, please loosen the transport locking screw (arrow). Loosen the recessed head screw, but don't remove it. Then try to tilt the camera module smoothly. With too much power the gimbal could be damaged.

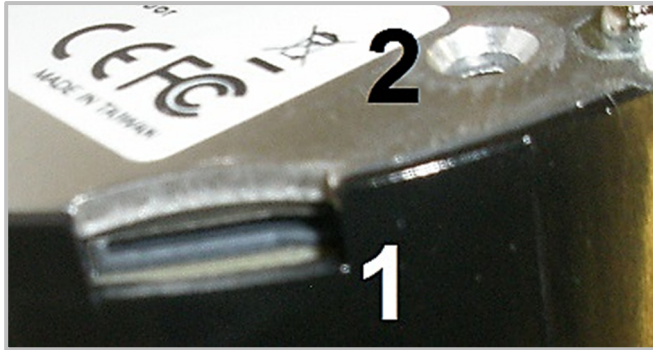


NOTE: If the camera module is set at the maximum top position, it may happen, that the view of angle will not be illuminated completely, because parts of the IR board will reach in the housing.

If the camera module must be adjusted to its vertical (bottom), ensure that the cables (circle) won't be pinched!

1.5 Default Button and micro SD card slot

The diagram below shows the default button and micro SD card slot.

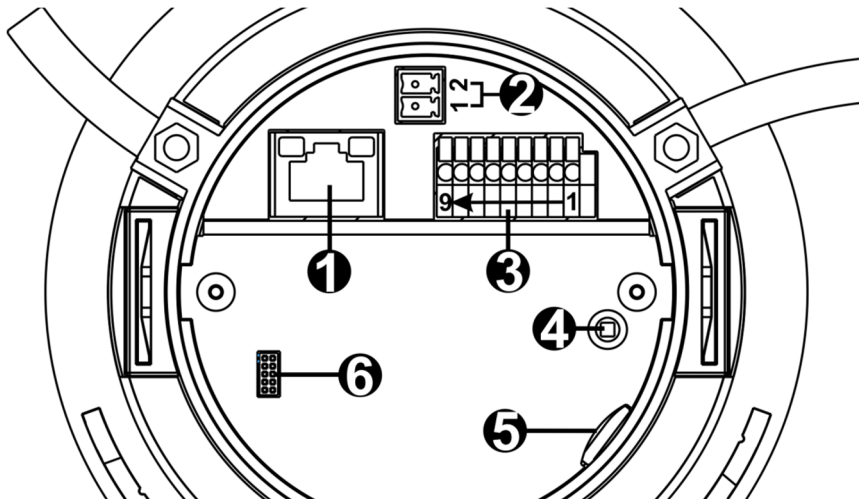


No.	Connector	Definition
1	microSD Card Slot	Insert the microSD card into the card slot to store videos and snapshots. Do not remove the microSD card when the camera is powered on.
2	Default Button	Press the button with a proper tool for at least 20 seconds to restore the system.



NOTE: It is not recommended to record with the microSD card for 24/7 continuously, as it may not be able to support long term continuous data read/write. Please contact the manufacturer of the microSD card for information regarding the reliability and the life expectancy.

1.6 Connections



No.	Connector	Pin	Definition	Remarks
1	RJ-45	-	Network and PoE connection	
2	Power supply	1	12 VDC	external power supply
		2	GND	
3	Alarm & Audio I/O*	1	Alarm In -	Alarm I/O
		2	Alarm In +	
		3	Alarm Out -	
		4	Alarm Out +	
		5	Audio Out R	Audio out R
		6	GND	common ground audio
		7	Audio Out L	Audio out L
		8	Audio In R	Audio in L/R
		9	Audio In L	
4	Default button	-	Press this button with an appropriate tool for 20 s min. to reset the camera to its default values.	
5	MicroSD card slot	-	Stick a micro SD card into the slot to record snapshots or videos. It must NOT be moved under camera operation!	
6	Console	-	This connector is not for installation, but serves for loading a software during maintenance or repair. Firmware updates have to be executed via network.	

*Do **NOT** connect external power supplies on the I/O connectors. GEUTEBRÜCK DVRs support listen only!

2. Camera Cabling

Before users connect cables, make sure that the camera is placed in dry environments.

2.1 Power Connection

For power connection, please refer to section [1.6 Connections](#).

Alternatively, the camera can be powered by PoE (IEEE 802.3af, 15.4 W).

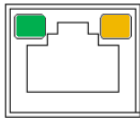
2.2 Ethernet Cable Connection

To have best transmission quality, cable length shall not exceed 100 meters. Connect one end of the Ethernet cable to the RJ-45 connector of the camera, and plug the other end of the cable to the network switch or PC.



NOTE: In some cases, Ethernet crossover cable might be needed when connecting IP camera directly to PC.

Check the status of the link indicator and the activity indicator LEDs. If the LEDs are unlit, please check the LAN connection.



Green: Link Light indicates good network connection. Orange: Activity Light flashes for network activity indication.

2.3 Alarm I/O Connection

Connect alarm devices to connector 5. Refer to section [1.6 Connections](#) for pin definitions.

2.4 Camera installation

Please read this chapter BEFORE starting the installation.

Needed parts:

- In-ceiling fixdome camera
- Cable for power supply (if PoE is not used)
- Network cable

Needed Tools:

- Tool to cut a cycle into the ceiling
- Crosshead screw driver (thread size M4)

Follow the steps to install the in-ceiling dome camera:

Step 1:

Draw a circle with a radius of 52 mm on the ceiling and cut out this circle.

Step 2:

Remove the dome cover by turning it counter-clockwise.



(figure 1)

Step 3:

Push the two latches of the camera module (fig. 2) and pull it out of its socket. Hold the camera and pull the socket smoothly down (fig. 3).



(figure 2)



(figure 3)

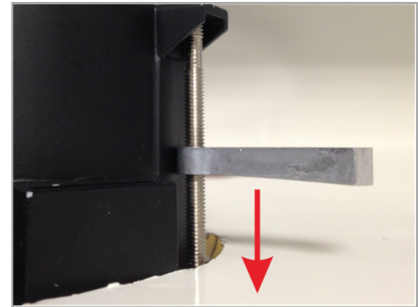
Step 4:

Stick the socket into the ceiling hole. Fix the socket by fastening the three screws clockwise (fig. 4).



(figure 4)

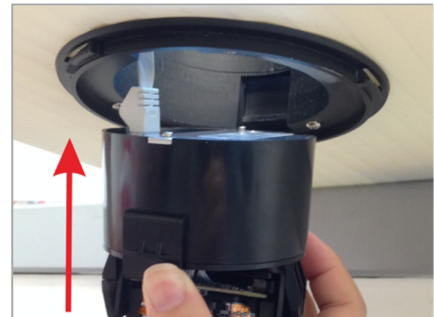
When tightening the three screws, the wings of the socket approach the ceiling board. Please ensure that these wings are close to this board.



(figure 5)

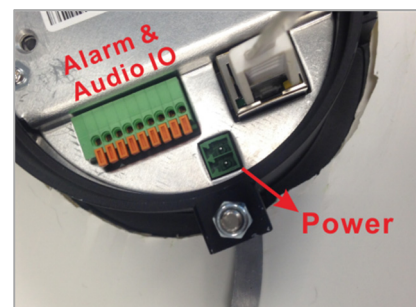
Step 5:

Put an ethernet cable through the ceiling opening and connect it to the camera. Align and put the camera module back into the socket (fig. 6).



(figure 6)

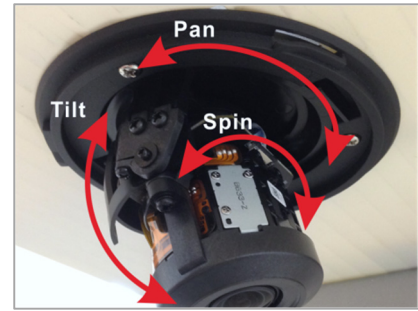
To connect an external power supply and the alarm or audio contacts, please refer to the chapter [1.6 Connectors](#).



(figure 7)

Step 6:

Adjust pan / tilt / spin of the camera module so that it matches the desired angle of view. Check it by accessing the camera's webpage.



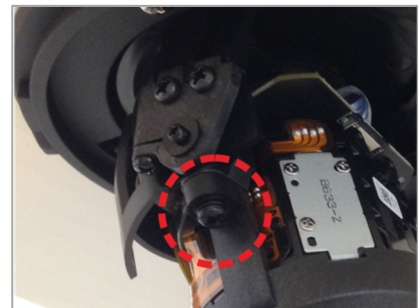
(figure 8)



NOTE: Pan adjustment is approx. 358°, tilt range is 0° ~ 75° and spin range is from 0° ~ 180°.

Step 7:

Fasten the tilt screw (see chapter 1.4) to fix the tilt angle (fig. 9).



(figure 9)

Step 8:

Put back the dome cover and turn it clockwise onto the socket.



(figure 10)

3. System Requirements

To perform the IP camera via web browser, please ensure the PC is in good network connection, and meet system requirements as described below.

Items	System Requirement
Personal Computer	Minimum: 1. Intel® Core™ i5-2430M @ 2.4 GHz 2. 4 GB RAM
	Recommended: 1. Intel® Core™ i7-870 @ 2.93 GHz 2. 8 GB RAM
Operating System	Microsoft Windows 7 / Windows 8 / Windows 10
Web Browser	Microsoft Internet Explorer 7.0 or later (recommended) Firefox (32-bit) Safari
Network Card	10Base-T (10 Mbps), 100Base-TX (100 Mbps) or 1000Base-T operation
Viewer	ActiveX control plug-in for Microsoft IE Apple QuickTime 7.7.7 or before for Firefox

* Note: in some cases, the Internet IE 11 Explorer's document format "Edge" doesn't show all items on its page. Change it to "IE 10" or lower to solve this (press F12).

4. Access Camera

For initial access to the IP camera, users can search the camera through the installer program DeviceSearch.exe, which can be found in “DeviceSearch” folder in the supplied CD.

Accessing the Camera by Device Search Software

Step 1: Double click on the program Device Search.exe.

Step 2: After its window appears, click on the <Device Search> button on the top. All the finding IP devices will be listed in the page.

Step 3: The default IP configuration is **DHCP**. If no DHCP server is in network, the camera sets itself to the address **192.168.0.250**.

This IP address may not be in the same LAN as the IP address of the PC. If so, the IP address of the camera needs to be changed. Right click on the camera and click <Network Setup>.

The <Network Setup> page will come out. Select <DHCP> and click <Apply> down the page. The camera will be assigned with a new IP address.

Click <OK> on the Note of setting change. Wait for one minute to re-search the camera. Meanwhile, record the MAC address of the camera, for future identification.

Step 4: Click on the <Device Search> button to re-search all the devices. Find the camera in the list by its MAC address. Then double click or right click and select <Browse> to access the camera directly via a web browser.

Step 5: A prompt window requesting for default username and password will appear. Enter the default username and password shown below to login to the camera.

Login ID	Password
root	admin



NOTE: ID and password are case sensitive.



NOTE: It is strongly advised that administrator's password be altered for the security concerns. Refer to the supplied web browser manual on the supplied CD for further details.

Installing Viewer Software Online

For the initial access to the IP camera, the client program DC Viewer will be automatically installed to the PC when connecting to the camera.

If the web browser doesn't allow Viewer installation, please check the Internet security settings or ActiveX controls and plug-ins settings (refer to section [Setup Internet Security](#)) to continue the process.

The Information Bar (just below the URL bar) may come out and ask for permission to install the ActiveX Control for displaying video in browser. Right click on the Information Bar and select <Install ActiveX Control...> to allow the installation.

The download procedure of Viewer software is specified as follows.

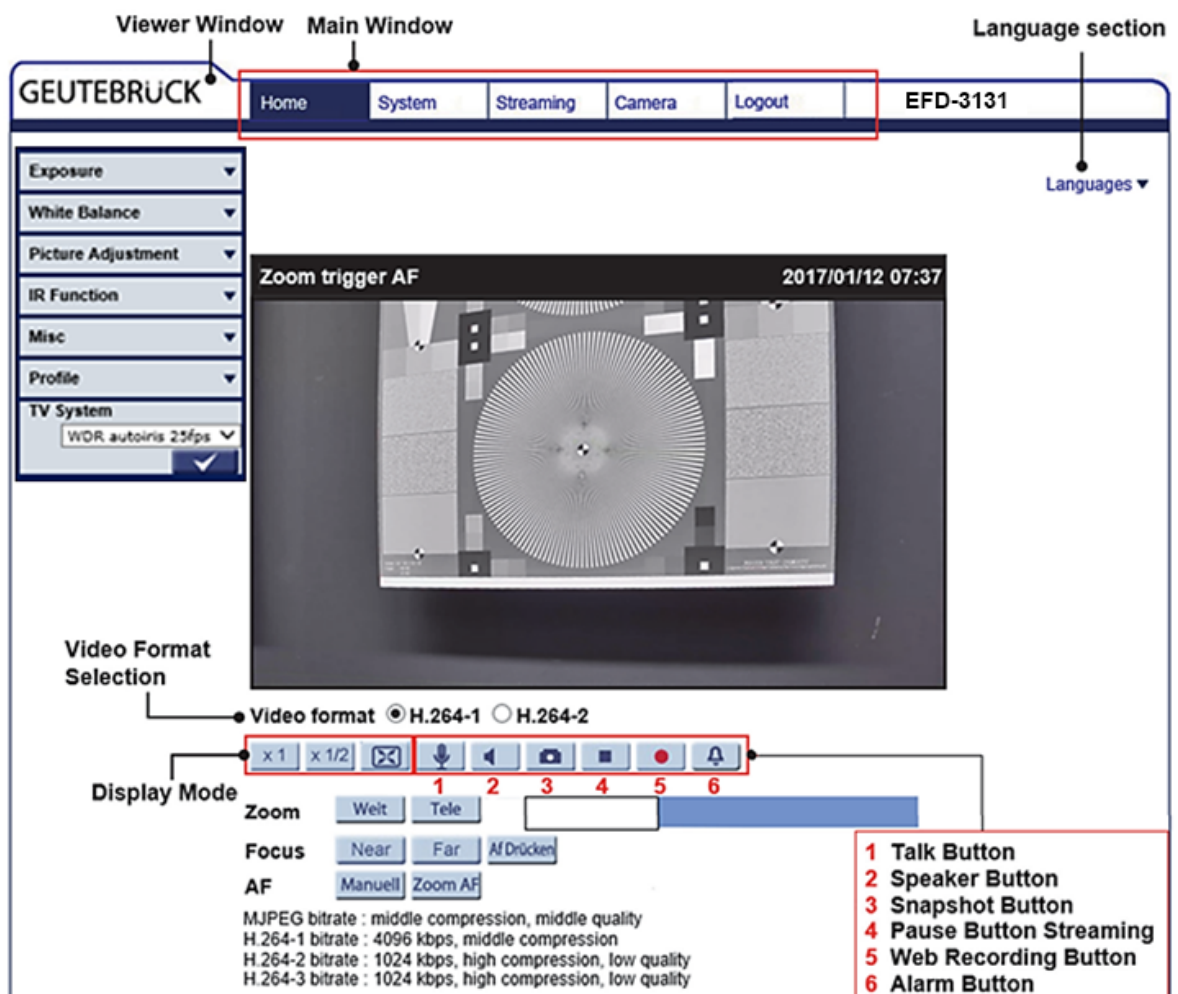
Step 1: In the Viewer installation window, click on <Next> to start installation.

Step 2: The status bar will show the installation progress. After the installation is completed, click on <Finish> to exit the installation process.

Step 3: Click on <Finish> to close the Viewer installation page.

Once the Viewer is successfully installed, the Home page of the IP camera will be shown as the figure below.

3x AF Lens Models



Zoom and Focus Adjustment (3x AF Lens Models)

The live image will be displayed on the Home page when the camera is successfully accessed. If zoom or focus is not at the desired position, please use the function buttons on the Home page for adjustment.

Refer to the [Full HD Ultra-WDR IP Camera Webbrowser Manual](#) in the supplied CD for more details about the function buttons.

5. Setup Video Resolution

Users can setup Video Resolution on Video Format page of browser-based configuration interface.

Video Format can be found under this path: **Streaming > Video Format**.

The default value of video resolution is as below.

2M	H.264- 1920 x 1080 (25 fps) + H.264- 1280 x 720 (25 fps)
-----------	--



NOTE: If you click on the stream combinations (drop-down list underneath “Video Resolution”), you automatically will be informed about the stream maxima (format 1 to 4). You also get information about the availability of corridor view. The camera **doesn't own** an analog video output (N/A = not available).

Click <Save> to confirm your settings.

5.1. Configuration Files Export / Import

To export / import configuration files, users can access the Maintenance page. Maintenance setting can be found under this path: **System > Maintenance**.

Users can export configuration files to a specified location and retrieve data by uploading an existing configuration file to the camera. It is especially convenient to make multiple cameras having the same configuration.



NOTE! Export and import of config files **MUST** be taken under the same firmware version! If after an export a camera upgrade has been done, the memorized export file cannot be uploaded to the camera!

Also important: Under the same firmware version it is not possible to upload a config file, when the name of the camera is different or they own different lenses!

Export

Users can save the system settings by exporting the configuration file (.bin) to a specified location for future use. Click on the <Export> button, and the popup File Download window will come out. Click on <Save> and specify a desired location for saving the configuration file.

Upload

To upload a configuration file to the camera, click on <Browse> to select the configuration file, and then click on the <Upload> button for uploading.

6. Commissioning in GEUTEBRÜCK Software



Attention: To install the IP cameras correctly, the software must be:
 - **GeViScope/re_porter** **Version 7.5.960.11** or higher
 - **G-Scope** **Version 1.1.3.38** or higher
 Older Software must be updated.
 Please download at: www.geutebrueck.com


6.1 Commissioning of IP Cameras in GSC-Setup

The following steps are required:

- The IP cameras must be assigned an IP address and a function package.
- Adding and configuring of the media channels.
- Proof of the dome functions in Telecontrol.

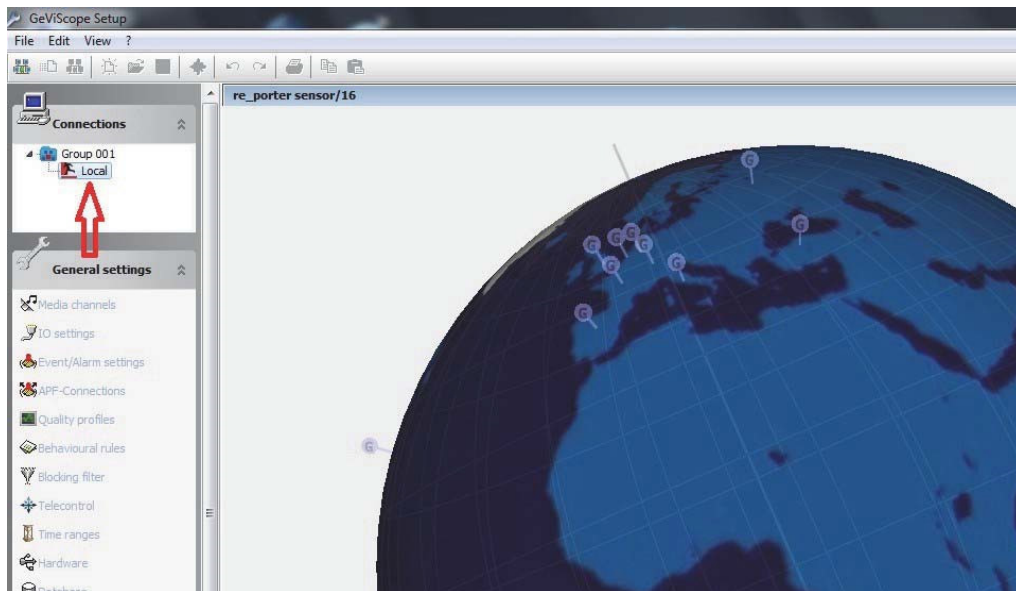
Following this, the connected IP domes are available in the GeViScope / re_porter.

Adding of the G-Cam/E3 IP cameras

Open the GeViScope setup menu by double-clicking the desktop icon .

Step 1: Connect the GeViScope to a server in the Connections menu.

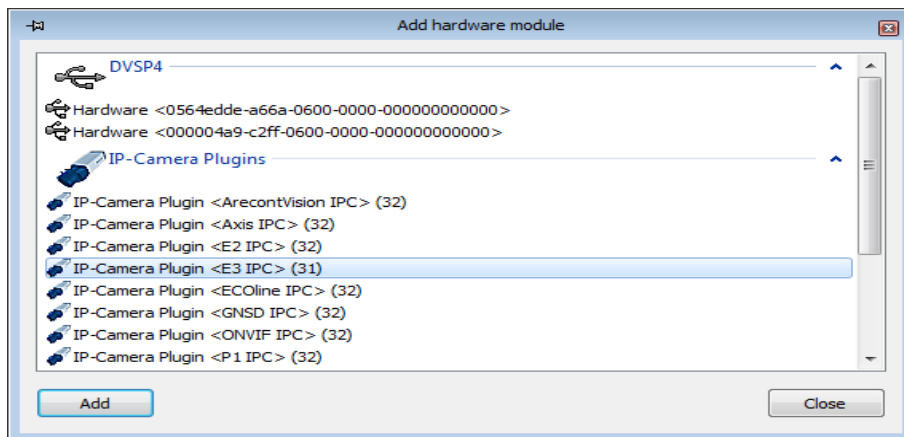
Step 2: Click the left mouse button to open the General Settings menu.



Click the menu item for Hardware in the General Settings menu.


The context menu is opened by clicking the  [Add] button.

In the list that appears, please select the E3 IP camera that you would like to add.



Confirm the selection by clicking **Add**.

The additional IP camera now appears in the hardware module list.

Click the icon  to send the settings to the server.

Select the IP camera that must be configured.

Choose the IP camera settings tab and assign an available IP-address.

Installation information for IP address configuration:

IP domes use static IP addresses. Therefore, the IP address of the GeViScope must have an IP address from the same IP subnet as the IP dome device.

a) Static IP address

GeViScope is assigned a fixed static IP address with the same IP subnet as the IP dome. This is the preferred configuration for a GeViScope that uses IP dome devices.

b) 2 network cards

As an alternative to a) a second network card can be installed in the GeViScope. This makes a dual operation of DHCP and static IP possible. Communication with the IP dome devices is carried out over the second network card that is configured with a static IP address as in a).

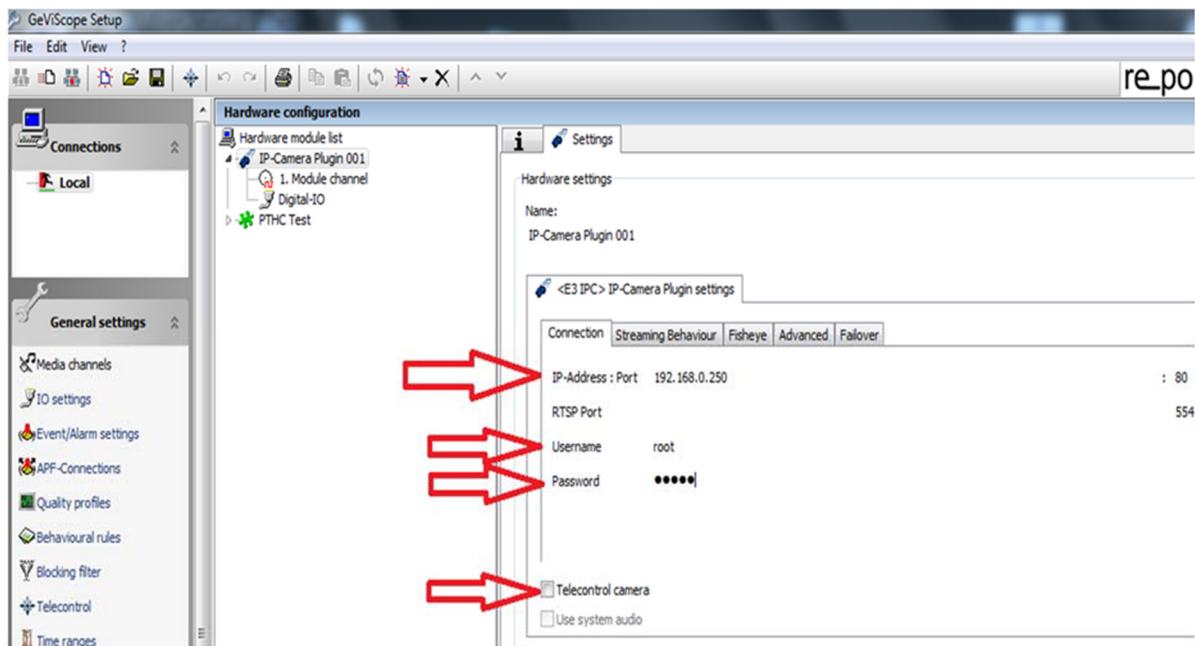
c) DHCP Modus

A GeViScope that runs in DHCP mode must be assigned, by the DHCP server, either a static IP address or an IP address from the same IP subnet as the IP dome devices.

To power up the Camera, please connect the Ethernet cable to the Camera's Ethernet Port and plug the other end of the cable into an IEEE 802.3at High Power over Ethernet (PoE Plus) Switch. If there is a need to operate the Heater for Outdoor Models, please plug the AC 24V cable into the Camera's Power Connector to power up the Camera instead.




Attention: A loss of the connection to the DHCP server can cause the connection loss to the IP dome devices! This operating mode should only be used if a continuous connection to the DHCP server is ensured!



Please insert the username “**root**” and password “**admin**”.

Activate the **Telecontrol camera button**, if you want to integrate an IP camera with motorized lens (Zoom and focus remote controlled) or of type EHC.

This activation configures automatically all needed parameters in the Telecontrol menu.

When you have checked all the settings yet again, click the  icon to send the settings to the server.

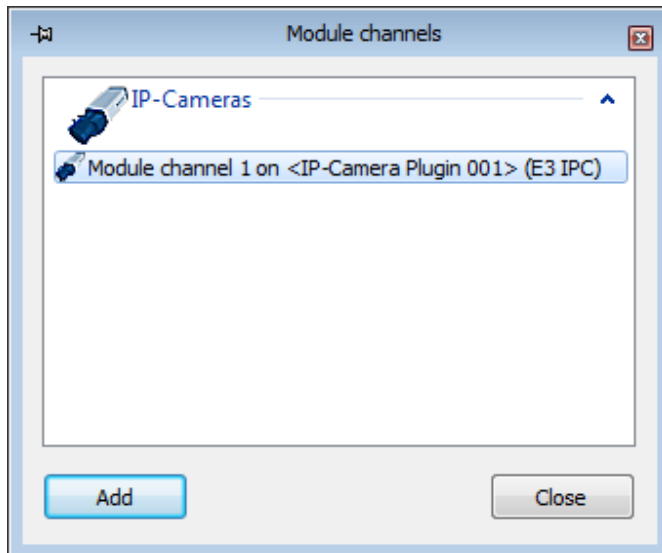
Adding and configuring media channels

On the General settings menu, click Media channels in order to initialize the media settings. The media channels of the basic unit are displayed.

The context menu is opened by clicking the „Add“ button.



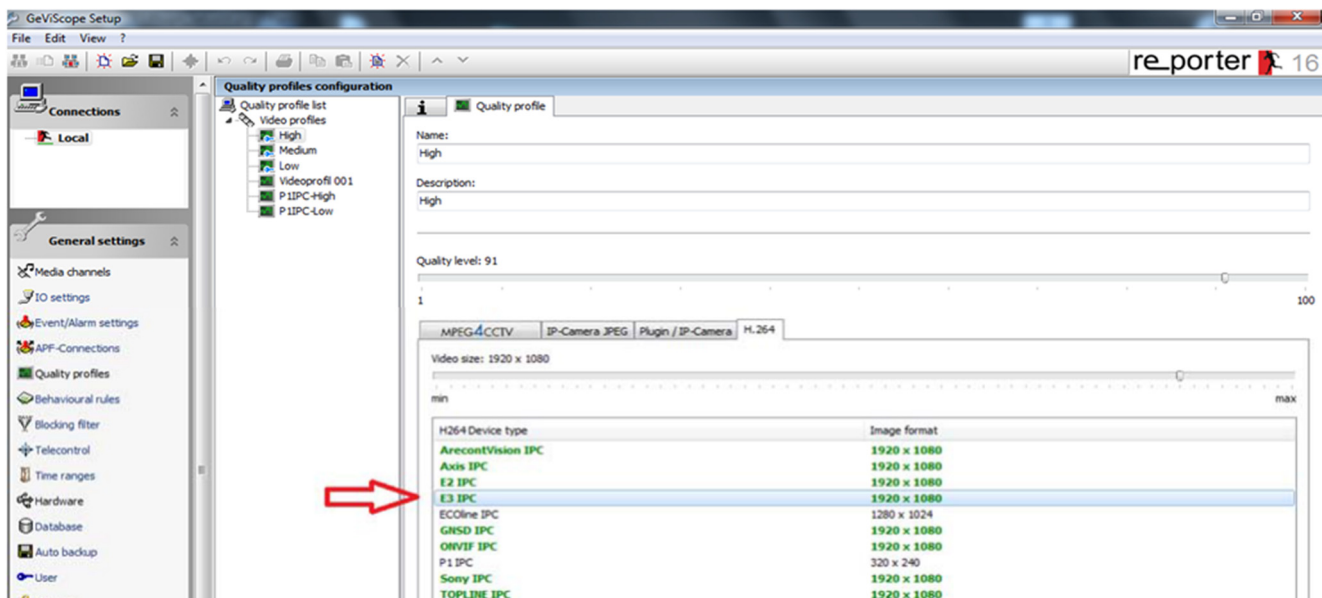
Please select the channels that you would like to add from the list that appears.




Confirm the input by clicking **Add**.

The compression format is automatically set to H.264.

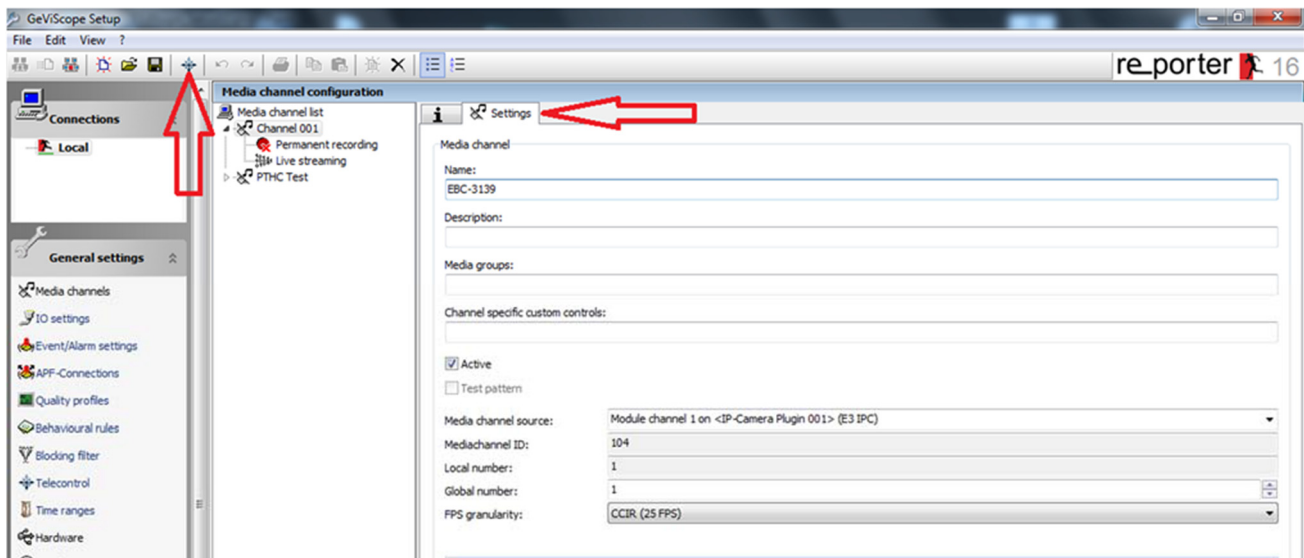
You only should control the image quality in the menu Quality profile. Move the slider till the image format of the chosen plugin type changes to green.



When you have checked all the settings yet again, click the  icon to send the settings to the server.

Please click on tab **Media channels** → folder **Settings** → **Telecontrol** button to check the correct Telecontrol functions with joystick and sliders.

This function is only available for cameras, which have a motorized lens (Zoom and focus remote controlled) or are of type EHC.



NOTE: The joystick operates only with IP cameras of type EHC (Motion within the quad display).

6.2 Commissioning of IP Cameras in G-Set



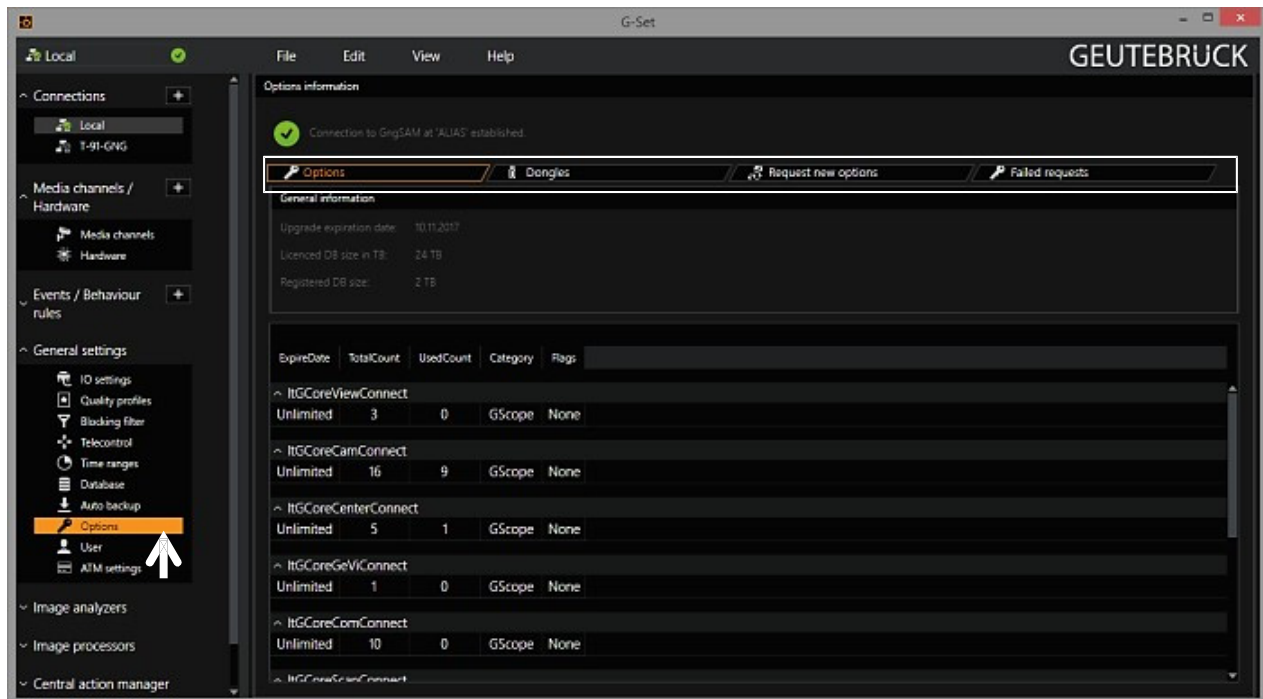
NOTE: For correct installation of IP cameras one **Option G-Core/CamConnect** must be available for each camera.

Available options are shown in G-Set at *General settings - Options*.

G-Core-Software must be version **1.2.7.55** or higher (-> www.geutebrueck.com).

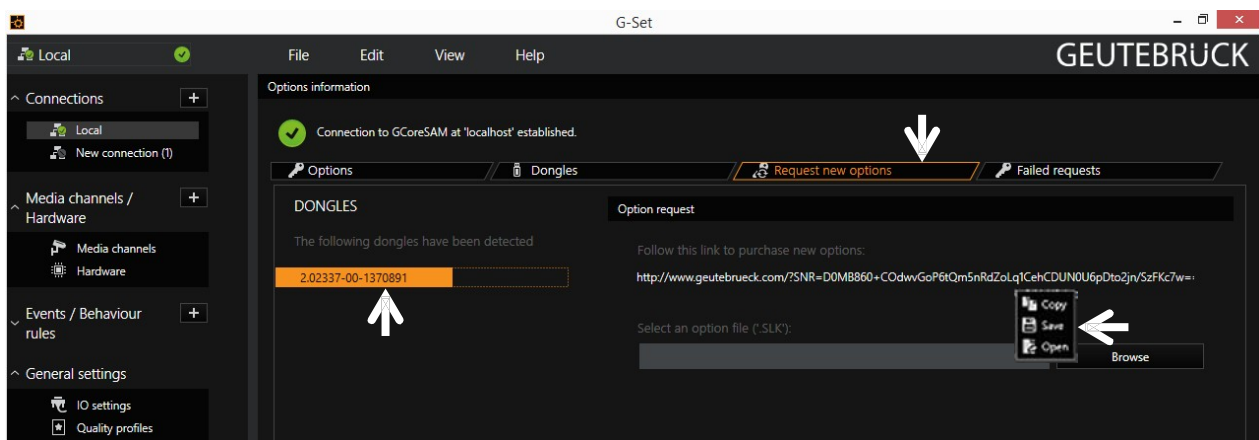
Required options can be ordered using *General settings - Options* in G-Set.

After clicking on *Options*, the options dialog opens with the first tab, which shows an overview of the available options.



The dialog shows the four tabs *Options*, *Dongles*, *Request new options* and *Failed requests*.

Request new options



New options can be requested using this dialog. When you click the dongle that will be assigned the new options, an URL appears in the field *Follow this link to purchase new options*.

Right clicking this URL opens a menu in which the URL can be copied, saved or opened in the default browser.

After passing the URL to a browser, follow the instructions on the GEUTEBRÜCK website.

Adding IP Cameras

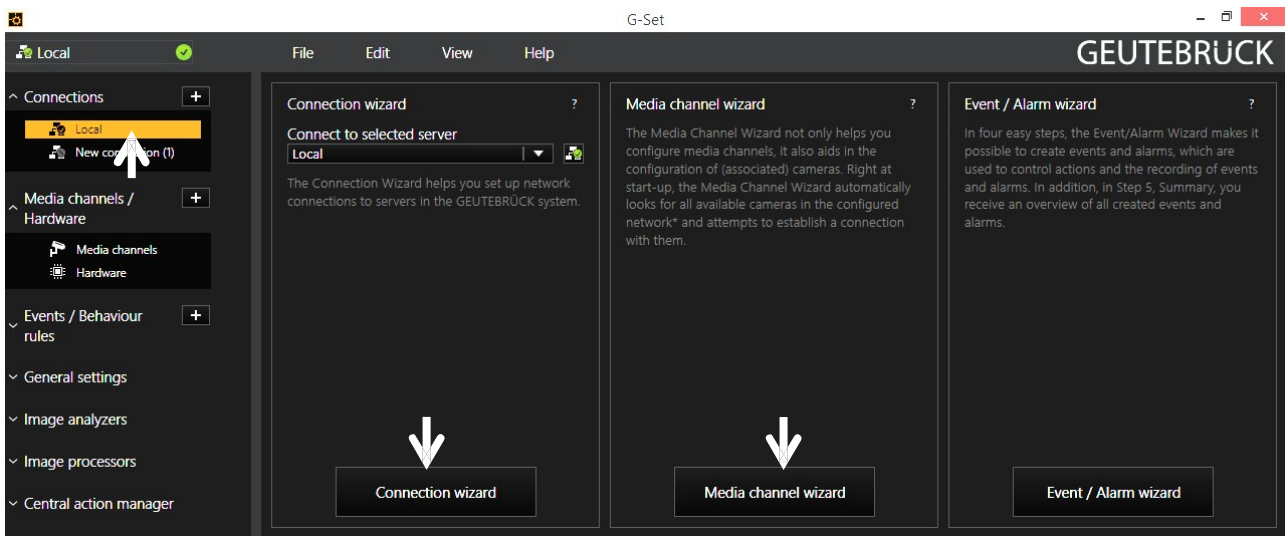


Please double click at desktop on the G-Set icon to open the G-Set configuration menu.

Step 1: Connection to a server

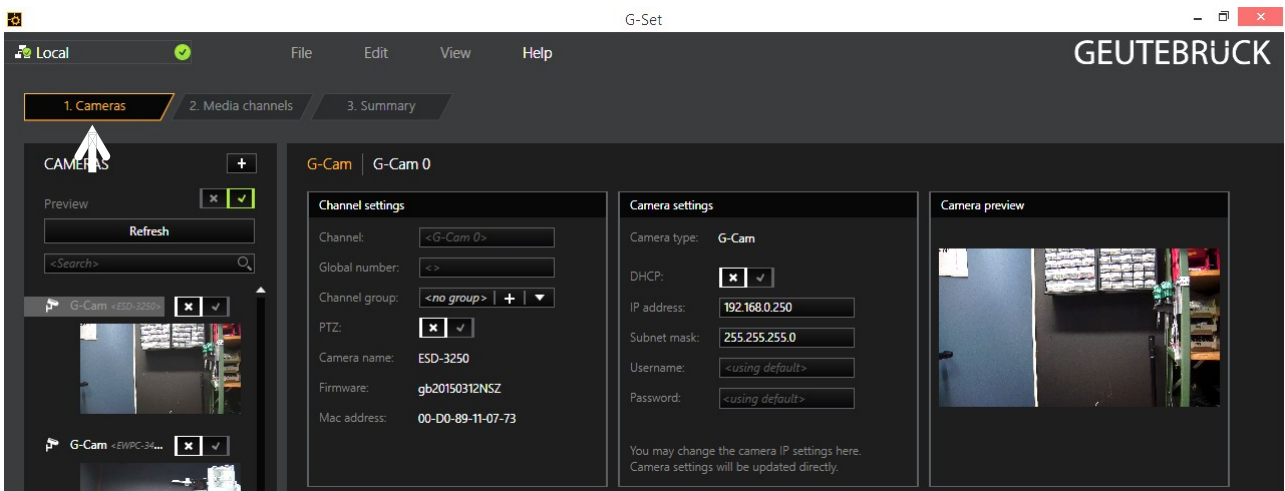
To connect G-Core with a (local or remote) server,

- Double-click on a connection available under *Connections* in the selection menu or
- In the Connection wizard dialog select a server from the list and click on the icon.
- By clicking *Connection wizard*, you can also configure new server connections.



Step 2: Activation and configuration of Media channels.

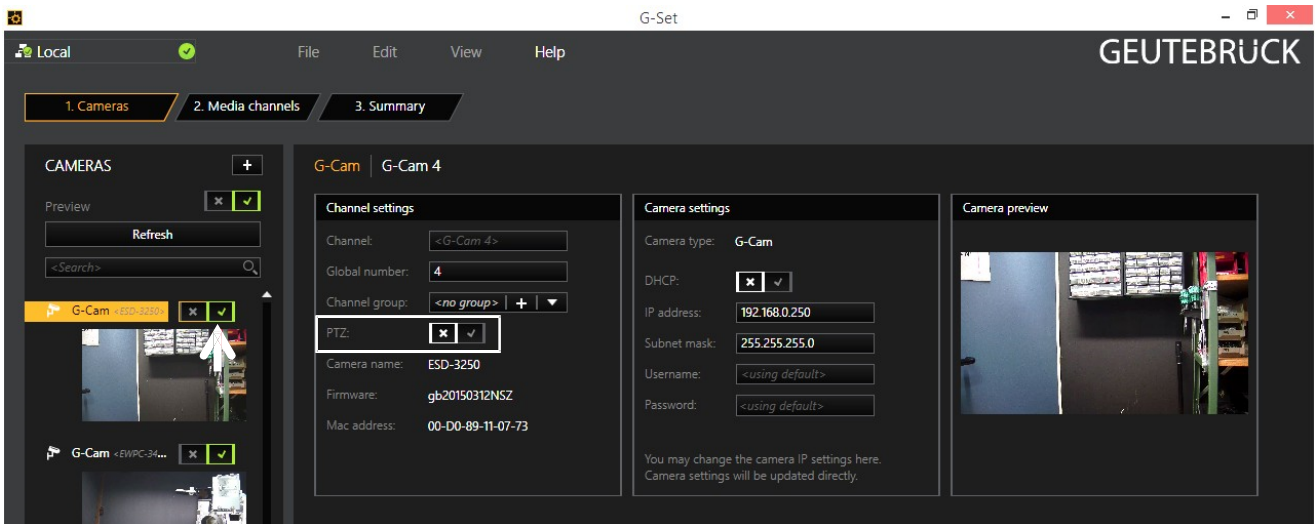
Left mouse click at *Media channel wizard* and click on tab *Cameras* opens the following window:



The Media Channel Wizard automatically searches for existing network cameras and displays them in the first column.

Cameras for which access rights are available are also displayed with a small camera image.

You can now select the desired camera by clicking the tick box (changes to green) and edit the general information and the camera-specific data.



NOTE: If you want to control a PTZ camera, the **tick box PTZ** in the menu *Channel Settings* **must** be activated.

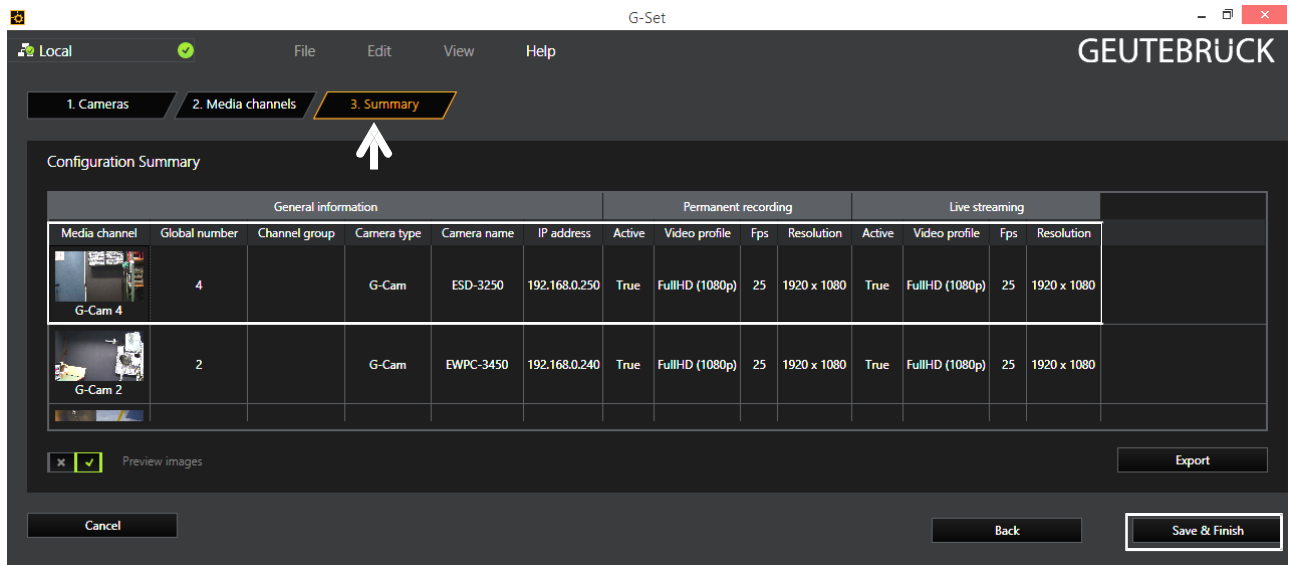
Left click on the tab *Media channels* opens the configuration window. At left column (camera tree) please choose the desired camera.



In the camera menus you can make the desired settings for *Permanent Recording* and *Live Stream*.

Step 3: Summary (check settings, confirm and transfer settings to the server).

Mouse click on tab *Summary* provides you with an overview of all the settings that have been defined for your cameras.

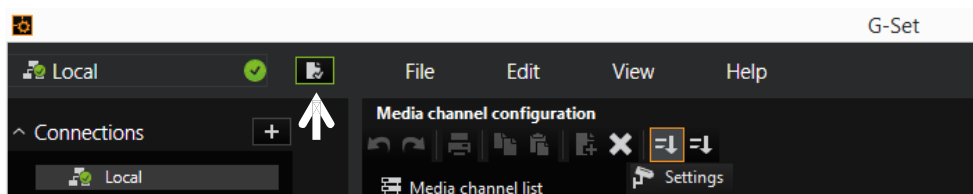


Please confirm your settings by clicking the button *Save & Finish*.

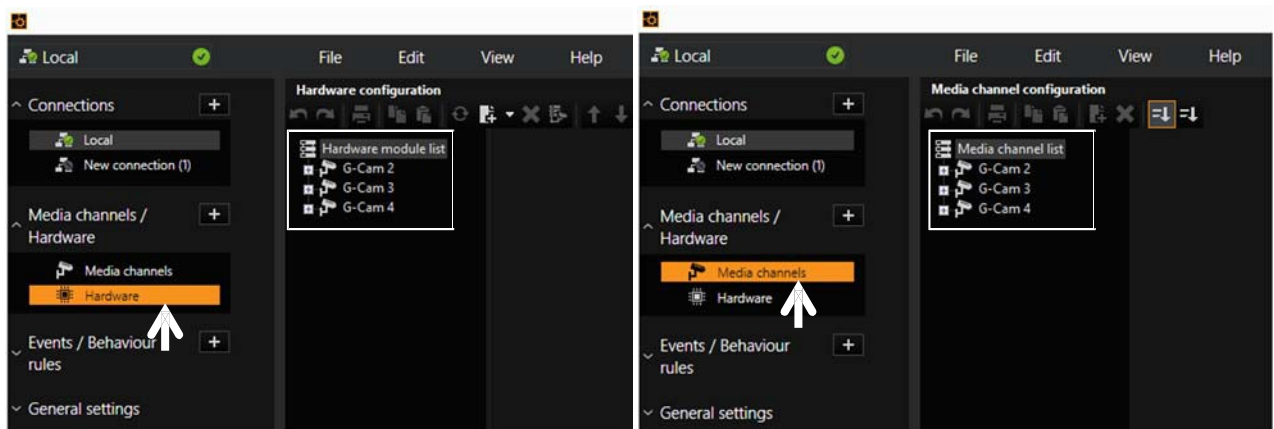


IMPORTANT: For settings to take effect, they **must** be sent to the server by clicking the icon .

You can find the *transfer button* on the *command bar* of G-Set.



Finally, with click at *Hardware* and *Media Channels*, you can check whether the camera is present in the network and the media channels are configured correctly.



Appendix A: Technical Data

Technical specifications	G-Cam/EFD-3131
Image sensor (Chip)	1/2,8" Sony Progressive CMOS
Picture format	16:9
Scanning system	Progressive scan
Mega pixel	2 MP (Full HD)
Minimum sensitivity	0.01 Lux (color), 0.0005 Lux (B/W)
Day/Night function	Auto / Night / Day /LED on / LED off / Smart / Light sensor
IR-LEDs and sensor	IR-LEDs (850 nm; 8 ea)
IR-LED visible range	max. 40 m
Wide Dynamic Range	Shutter WDR 120 dB
White balance	Automatic / Manual / One Push ATW
Exposure	Automatic / Manual
Shutter	1 s - 1/10.000 s
Back Light Compensation	On/Off (only if TV system w/o WDR)
Digitale Noise Reduction	2D/3D (low/middle/high/off)
Text overlay	Yes
Ethernet interface	RJ45: 10/100/1000 Mbps
OSD-Menu	English/German/French/Italian/Korean/Simplified Chinese/Traditional Chinese/Russian/Spanish/Japanese/Portuguese
Mirror-Function	Normal/Flip/Mirror H/180° Rotation
Portrait/Corridor View	Yes (stream dependent)
Compression	H.264, MJPEG
Picture rate (full resolution)	Dual Stream: 1080p @ 50/60 fps + H.264/MJPEG as 360p @ 50/60 fps or 2x 1080p @ 30 fps
Resolutions	16:9 formats only: 1080p, 720p, 360p
Video Streaming maximum	Quad Stream, configurable
Audio	1x In, 1x Out/G.711, G.726
Protocols	HTTP, HTTPS (TLS 1.2 nur Metadaten), TCP, FTP, RTSP, RTP, UDP, SMTP, SNMP, ICMP, IGMP, DHCP, UPnP, PPPoE, QoS, ONVIF, IPv4/v6, IEEE802.1X (SHA-2)
ONVIF compatible	Yes; Profile S
Motion detection	Yes
Alarm In/Output	1x In, 1x Out
Browser	Internet Explorer 7.0 and higher, Chrome, Firefox, Safari
Privacy masking	5 adjustable masking zones (8 colors)
Digital Image Stabilization	yes (on / off)
Picture Memory	µSD slot 64 GB max.
Lens model	P-Iris, auto focus
Focal length	f = 3.0 mm to 9.0 mm (motorized)
Digital zoom	yes; x2 - x16
Auto Focus	Auto, manual, One Touch Function, Zoom Trigger
F-Stop	F1.3
Angle of view	f = 3,0 mm / 113° (H) f = 9,0 mm / 36° (H)

Camera angle adjustment range	Horizontal: < 360° Vertical: 0° ~ 75° Turn: 0° ~ 180°
Operating temperature	- 30 °C to + 50 °C
Start-up temperature	- 20 °C to + 50 °C
Humidity in operation	10 - 90 % rel. humidity (non condensing)
Power consumption system	3.64 W
Power consumption of separated components additionally to system	Zoom lens 1.1 W; IR LEDs 4.0 W
Connectors	RJ-45 Ethernet; Alarm I/O (4/9); Audio In/Out (5/9); 2pin connector for external power supply
Dimensions in mm (diameter x length)	128.5 x 90
Weight	Approx. 405 g
Certifications	FCC, CE, RoHS
Licensing	unit dependent (Gsc or G-Core)
Brand	GEUTEBRUCK
Order No.	5.04798

Appendix B: Delete the Existing DC Viewer

For users who have installed the DC Viewer in the PC previously, please remove the existing DC Viewer from the PC before accessing to the IP camera.

Deleting the DC Viewer

In the Windows <Start Menu>, activate <Control Panel>, and then double click on <Add or Remove Programs>. In the <Currently installed programs> list, select <DCViewer> and click on the button <Remove> to uninstall the existing DC Viewer.

Deleting Temporary Internet Files

To improve browser performance, it is suggested to clean up all the files in the Temporary Internet Files. The procedure is as follows.

Step 1: Click on the <Tools> tab on the menu bar and select <Internet Options>.

Step 2: Click on the <Delete> button under the <Browsing History> section.

Step 3: In the appeared window, tick the box beside the <Temporary Internet Files> and click on <Delete> to start deleting the files.

Appendix C: Setup Internet Security

If ActiveX control installation is blocked, please either set Internet security level to default or change ActiveX controls and plug-ins settings.

Internet Security Level: Default

Step 1: Start the Internet Explorer (IE).

Step 2: Click on the <Tools> tab on the menu bar and select <Internet Options>.

Step 3: Click on the <Security> tab, and select <Internet> zone.

Step 4: Down the page, click on the <Default Level> button and click on <OK> to confirm the setting. Close the browser window, and restart a new one later to access the IP camera.

ActiveX Controls and Plug-in Settings

Step 1: Repeat **Step 1 to Step 3** of the previous section above.

Step 2: Down the page, click on the <Custom Level> button to change ActiveX controls and plug-in settings. The Security Settings window will pop up.

Step 3: Under <ActiveX controls and plug-ins>, set **ALL** items (as listed below) to <Enable> or <Prompt>. Please note that the items vary by IE version.

ActiveX controls and plug-ins settings:

1. Binary and script behaviors.
2. Download signed ActiveX controls.
3. Download unsigned ActiveX controls.
4. Allow previously unused ActiveX controls to run without prompt.
5. Allow Scriptlets.
6. Automatic prompting for ActiveX controls.
7. Initialize and script ActiveX controls not marked as safe for scripting.
8. Run ActiveX controls and plug-ins.
9. Only allow approved domains to use ActiveX without prompt.
10. Script ActiveX controls marked safe for scripting*.
11. Display video and animation on a webpage that does not use external media player.

Step 4: Click on <OK> to accept the settings. A prompt window will appear for confirming the setting changes, click <Yes(Y)> to close the Security Setting window.

Step 5: Click on <OK> to close the Internet Options screen.

Step 6: Close the browser window, and restart a new one later to access the IP camera.

GEUTEBRÜCK

GEUTEBRÜCK GmbH

Im Nassen 7-9 | D-53578 Windhagen

Tel. +49 (0)2645 137-0 | Fax-999

info@geutebrueck.com

www.geutebrueck.com

Technische Änderungen vorbehalten.

Technical alterations reserved.

Sous réserve des modifications.

Suministro sujeto a modificaciones técnicas o disponibilidad.